

# Product Datasheet

## Wall mounted ASA closed bowl eye wash

### STD-45G

Suitable for indoor use, and outdoors in warmer climates, this eye/face wash is essential for potentially hazardous industries and applications. The integral ASA lid connects to the water valve for automatic operation when the lid is pulled down.

The unit benefits from chemical and UV resistance, as well as excellent durability due to the ASA construction. An improved washing action is achieved via the high flow rate aerated diffusers. Meets the requirements of EN15154 and ANSI Z358.1-2014.



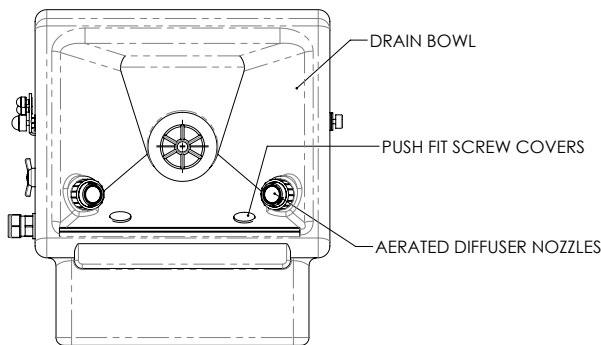
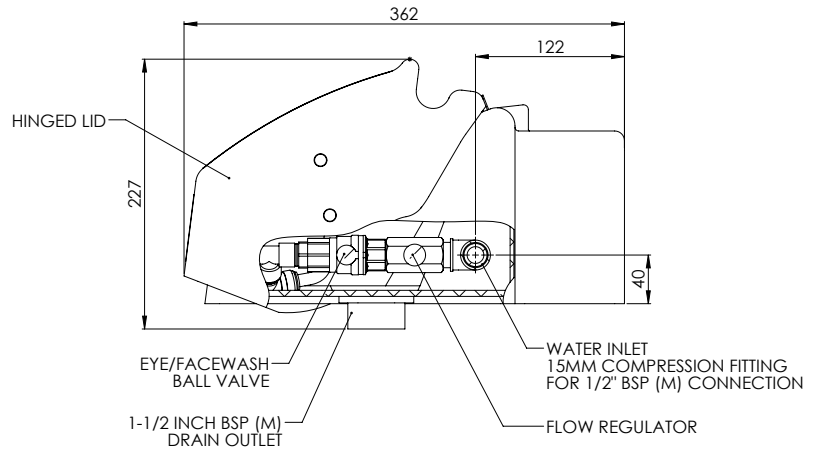
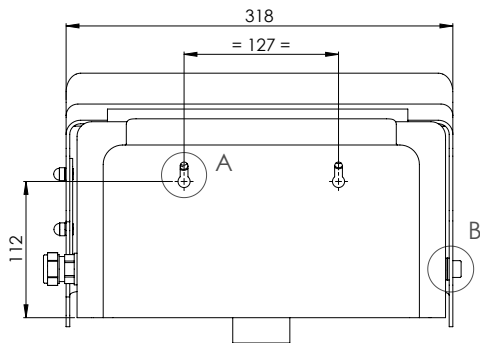
## Specifications

| MATERIALS OF CONSTRUCTION     |  |
|-------------------------------|--|
| BOWL/LID                      | ASA  |
| DIFFUSERS                     | Chrome plated brass retaining ring, stainless steel filter mesh, plastic body  |
| STANDARD FINISH               | White with green pictogram sign  |
| SERVICES                      |  |
| WATER INLET                   | 1/2" Female BSP  |
| OPERATING PRESSURE            | 2.0 to 6 BAR G / 29 to 87 PSI<br>(higher supply pressures accommodated with the incorporation of the optional pressure reducing valve) |
| MINIMUM FLOW RATES            | 12 L per minute / 3 US gal per minute  |
| AMBIENT OPERATING TEMPERATURE |  |
| MINIMUM                       | 5C / 41F   |
| MAXIMUM                       | 35C / 95F  |
| OPERATION                     |  |
| EYE/FACE WASH                 | Pull lid down  |
| DIMENSIONS & WEIGHT           |  |
| DIMENSIONS (WxDxH)            | 318mm (12.5in) x 362mm (14.3in) x 227mm (8.9in)  |
| WEIGHT                        | 3kg / 7lb  |

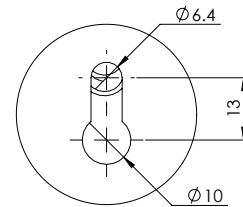
# General Arrangement Drawing

## Wall mounted ABS closed bowl eye wash

STD-45G



PLAN VIEW (LID REMOVED)



DETAIL A  
MOUNTING DETAILS  
SCALE 1 : 1