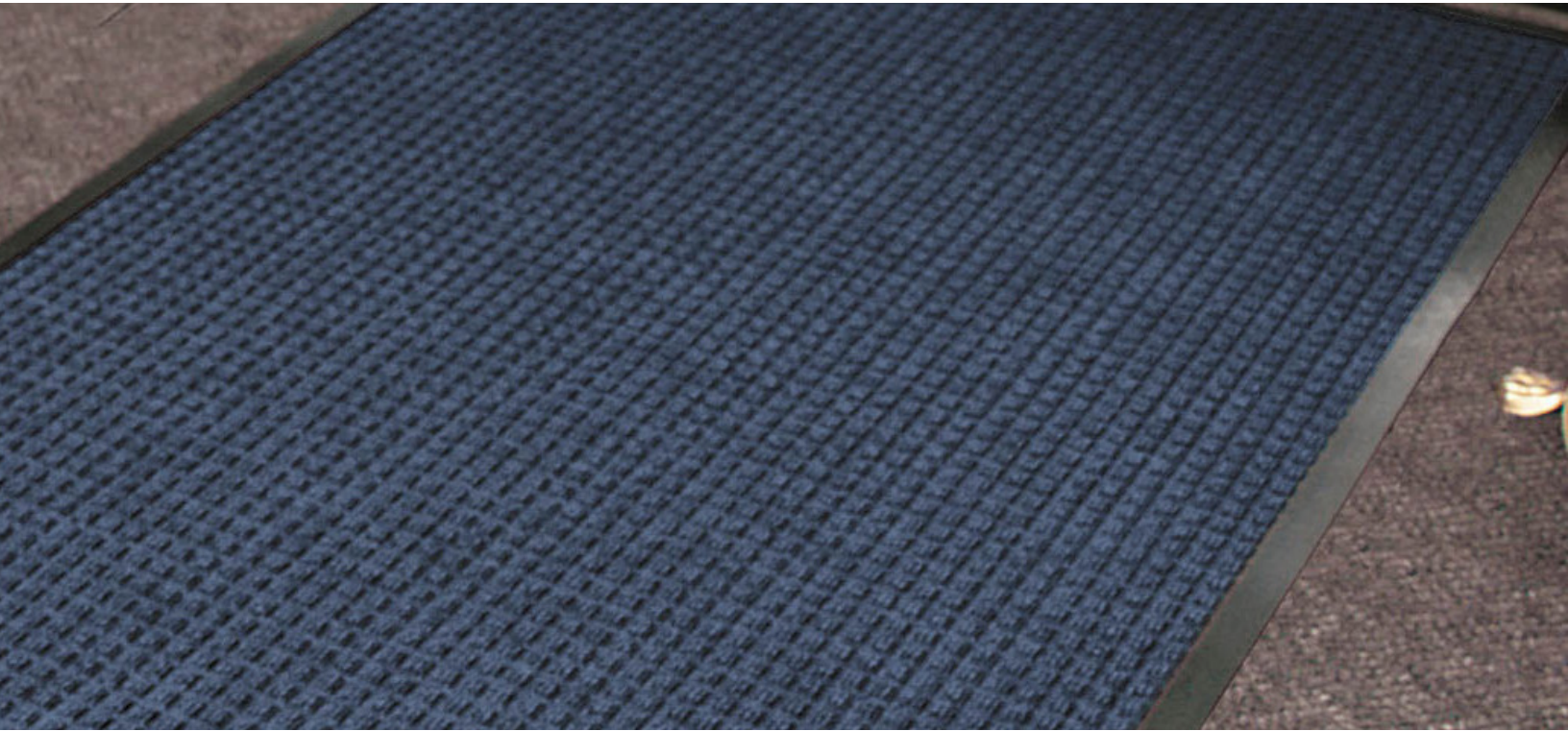




Justrite Safety Group

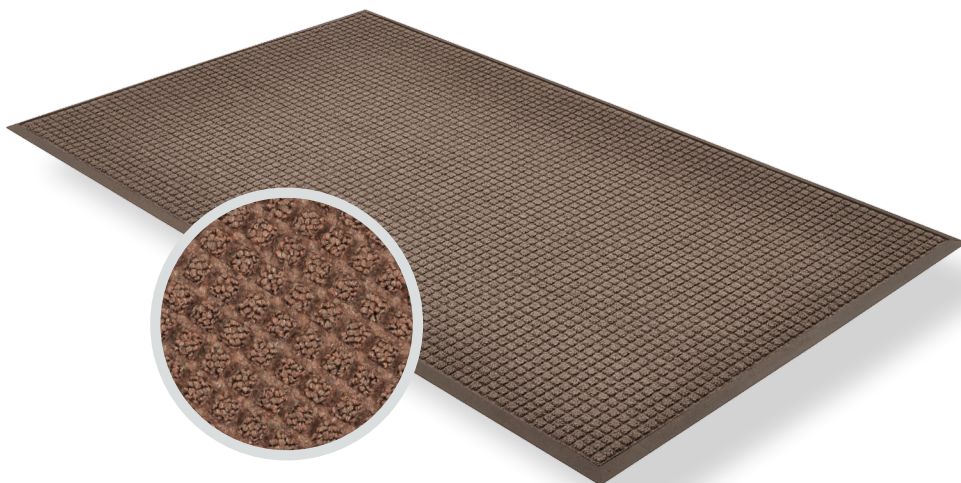
**T35 - WATER MASTER™**  
PRODUCT INFORMATION BROCHURE





For over 70 years, the name Notrax<sup>®</sup> has meant superior quality, service, and innovative products. Now this brand is a cornerstone of Justrite Safety Group, offering the widest selection of products to a variety of markets and applications including entrance mats, anti-fatigue/safety mats, and products designed specifically for use in professional food service environments. Notrax<sup>®</sup> offers a complete selection of floor matting options to meet any application requirement, quality expectation, and budget.

- **Track record of manufacturing high quality mats for over seventy years**
- **All products are manufactured in ISO certified facilities**
- **Notrax<sup>®</sup> offers anti-fatigue matting, entrance matting, safety matting, food service matting and specialty mats designed for a variety of industries**



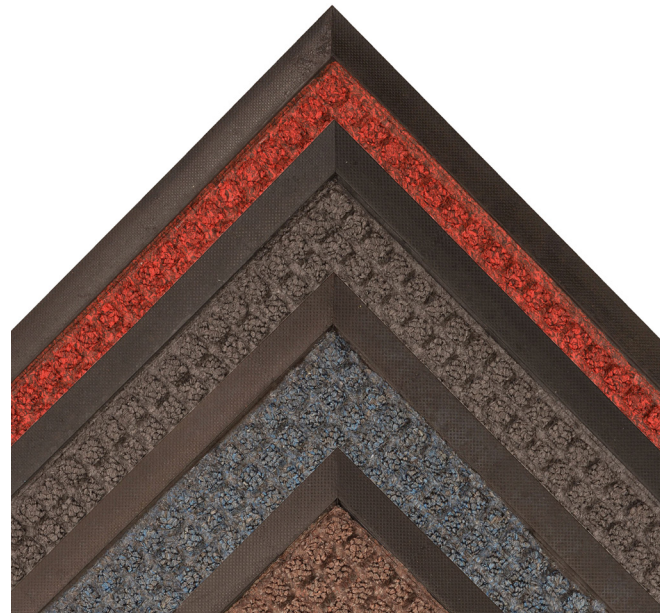
**T35 - WATER MASTER™** entrance mats are intended for use in medium to heavy traffic areas. The raised, crushproof waffle design aggressively scrapes and cleans, while the rubber-edged perimeter entraps dirt and moisture for superior water and soil control. Molded rubber “cleats” on the underside of the mat grip the underlying surface minimizing mat movement. Water Master™ uses a stain and fade resistant fiber to keep colors sharp and the mat looking new, and is highly recommended for “Green Cleaning” applications.

**Material:** Polypropylene Carpet W/Rubber Backing

**Features and Benefits:**

- High/low pattern facilitates scraping and keeps moisture and debris away from foot traffic
- Raised rubber border on all 4 sides traps moisture and debris for easy removal
- Molded rubber cleats on the bottom of the mat grip underlying surfaces and minimize mat movement
- 26 ounces of tufted yarn per square yard for increased moisture retention, and easier cleaning
- Low profile to perform in narrow clearance doorways
- Recommended and approved product as a part of the GreenTRAX™ program for “Green Cleaning” environments

**WARNING:** This product can expose you to 2-mercaptobenzothiazole which is known to the State of California to cause cancer. For more information, visit [www.P65Warnings.ca.gov](http://www.P65Warnings.ca.gov)



MODEL: T35

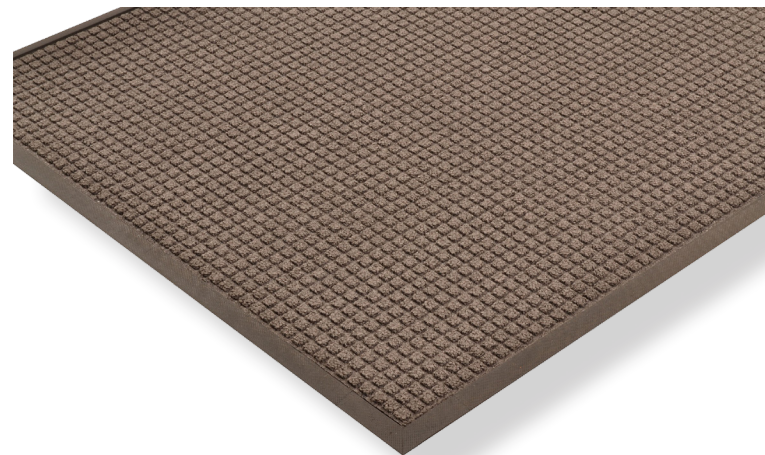
## SPECIFICATIONS

**APPLICATIONS**

- Entranceways
- Lobbies
- Indoor Light to Medium Traffic Areas

Stock Sizes	3'x5', 4'x6'			
Thickness	3/8"			
Colors				
	Brown	Charcoal	Slate Blue	Red/Black

**Performance:**



# TESTING DATA

Test	Test Description	Results
ASTM D3884-01	Abrasion Resistance	-0.99 grams (3.1%)
ASTM D6540-00	Accelerated Soiling	Based on Visual Inspection 3.5 - Vacuum Rating 4.0 - Rating After Extraction
ASTM E648-03	Critical Radiant Flux	0.11 Watts/Cm2
CPSC FF 1-70 (ASTM D-2859)	Surface Flammability of Carpets and Rugs Ignition Characteristics - Finished Textile Floor Covering Material	Pass
-	Water Retention	Weight Gain = 47.7% (0.427 gals./yd2)

\*Testing performed by an independent test laboratory.

## NOTRAX®

5655 West 73rd Street  
Chicago, IL 60638

**PHONE:** (800) 621-2802

**FAX:** (800) 322-7105

**EMAIL:** saleschicago@checkers-safety.com

www.notrax.com



A PRODUCT OF:



Justrite Safety Group is the leading source of safety equipment for flammables and hazardous materials storage and handling, asset protection, environmental protection spill containment, absorbents, specialized chemical storage, cable management, safety showers and eye/face washes, matting, and vehicle safety equipment. Learn more at Justrite.com, Checkers-safety.com, and Notrax.com.