



Justrite Safety Group

# 985 - ERGO TRAX® GRANDE™

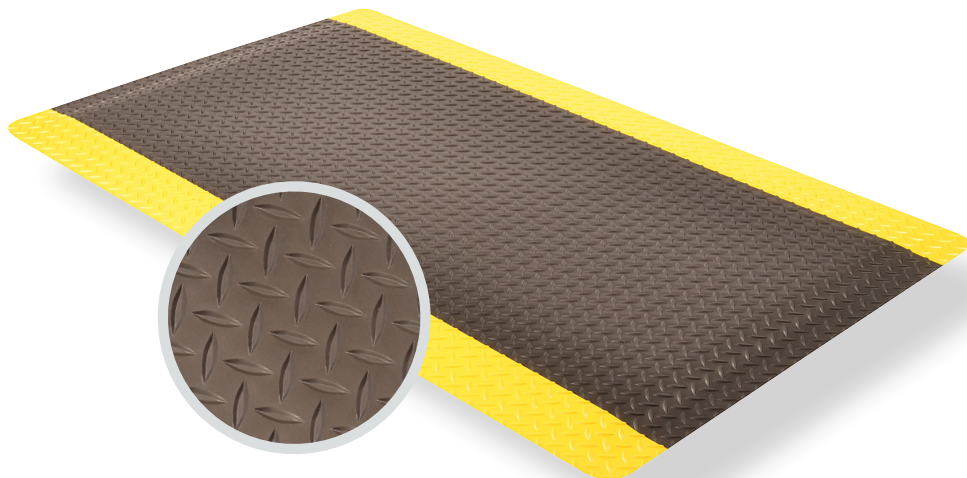
PRODUCT INFORMATION BROCHURE





For over 70 years, the name Notrax<sup>®</sup> has meant superior quality, service, and innovative products. Now this brand is a cornerstone of Justrite Safety Group, offering the widest selection of products to a variety of markets and applications including entrance mats, anti-fatigue/safety mats, and products designed specifically for use in professional food service environments. Notrax<sup>®</sup> offers a complete selection of floor matting options to meet any application requirement, quality expectation, and budget.

- **Track record of manufacturing high quality mats for over seventy years**
- **All products are manufactured in ISO certified facilities**
- **Notrax<sup>®</sup> offers anti-fatigue matting, entrance matting, safety matting, food service matting and specialty mats designed for a variety of industries**



**985 - ERGO TRAX® GRANDE™** is a thicker, heavier and stronger anti-fatigue floor mat. Engineered to meet the toughest requirements of today's industrial applications and is particularly suited for multi-shift operations in dry work areas. At a full ONE-INCH thick, it is the ultimate anti-fatigue product maximizing worker productivity and comfort. The durable vinyl diamond-plate top surface design provides non-directional traction and is easy to clean. The top surface is combined with a Niru® rubber sponge base utilizing Notrax® exclusive UniFusion™ technology that virtually eliminates the possibility of de-lamination.

**Material:** Vinyl Surface with Niru® Nitrile Rubber Sponge Base

### Features and Benefits

- Heavy duty vinyl top surface combined with Niru® rubber base provides superior durability and traction
- Niru® rubber foam base provides high friction to reduction in mat movement
- Vinyl top surface is made of 100% recycled materials
- UniFusion™ bond guaranteed for the life of the mat
- Beveled edges on all 4 sides
- Diamond Plate surface for industrial uses, yellow edge says pay attention you are moving up in elevation and into work area



MODEL: 985



**WARNING:** This product can expose you to chemicals including di-2-ethylhexyl phthalate and/or diisononyl phthalate which is known to the State of California to cause cancer, birth defects or reproductive harm. For more information, visit [www.P65Warnings.ca.gov](http://www.P65Warnings.ca.gov)

- APPLICATIONS**
- Workstations
  - Packaging Areas
  - Assembly Lines
  - Long Aisle Runs

## SPECIFICATIONS

Stock Sizes	2'x3', 3'x5', 3'x12'
Roll Sizes	2'x75', 3'x75', 4'x75'
Thickness	1"
Cut Lengths	2', 3', and 4' widths (up to 75' long)
Colors	 Black  Black/Yellow

**Performance:**

	Good	Better	Best	Superior
Wear Resistance	████████████████████			
Anti-fatigue Performance	████████████████████			
Slip Resistance	████████████████████			





**NOTRAX®**

5655 West 73rd Street  
Chicago, IL 60638

**PHONE:** (800) 621-2802

**FAX:** (800) 322-7105

**EMAIL:** saleschicago@checkers-safety.com

[www.notrax.com](http://www.notrax.com)

A PRODUCT OF:



Justrite Safety Group is the leading source of safety equipment for flammables and hazardous materials storage and handling, asset protection, environmental protection spill containment, absorbents, specialized chemical storage, cable management, safety showers and eye/face washes, matting, and vehicle safety equipment. Learn more at [Justrite.com](http://Justrite.com), [Checkers-safety.com](http://Checkers-safety.com), and [Notrax.com](http://Notrax.com).