



Justrite Safety Group

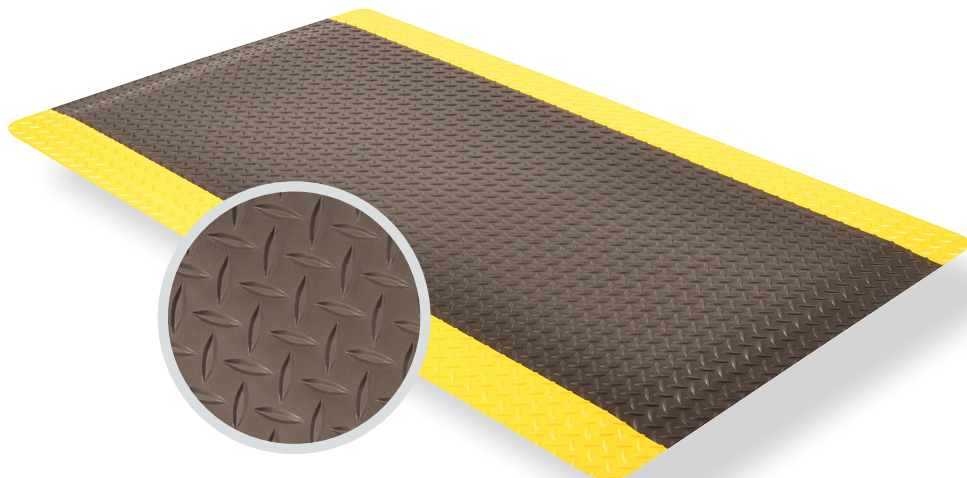
976 - DURA TRAX® ULTRA™
PRODUCT INFORMATION BROCHURE





For over 70 years, the name Notrax[®] has meant superior quality, service, and innovative products. Now this brand is a cornerstone of Justrite Safety Group, offering the widest selection of products to a variety of markets and applications including entrance mats, anti-fatigue/safety mats, and products designed specifically for use in professional food service environments. Notrax[®] offers a complete selection of floor matting options to meet any application requirement, quality expectation, and budget.

- **Track record of manufacturing high quality mats for over seventy years**
- **All products are manufactured in ISO certified facilities**
- **Notrax[®] offers anti-fatigue matting, entrance matting, safety matting, food service matting and specialty mats designed for a variety of industries**



976 - DURA TRAX® ULTRA™ is 3/4" thick high performance anti-fatigue floor mat representing the ultimate in comfort and durability for today's industrial environments. A nitrile rubber top surface provides a noticeably softer and more comfortable work surface and a diamond-plate design offers greater slip resistance and is easy to sweep or mop clean. Dura Trax® Ultra™ combines the heavy-duty nitrile rubber top surface with a dense sponge backing utilizing Notrax® exclusive UniFusion™ technology. This virtually eliminates the possibility of de-lamination. All Notrax® laminate floor mats come standard with RedStop™, a uniquely engineered non-slip backing technology that eliminates the slipping and sliding of floor mats on smooth surface flooring such as vinyl composite tile, painted or epoxy coated concrete, vinyl sheet flooring, carpet, and ceramic tile.

Material: Nitrile Rubber Surface With Dense Closed Cell PVC Foam Base

Features and Benefits:

- Nitrile rubber diamond plate top surface is combined with a dense closed cell PVC foam base
- Made from 100% recycled materials
- Diamond-plate surface texture provides added traction
- Withstands exposure to sparks (Hot metal nut tested at 600 degrees)
- UniFusion™ bond guaranteed for the life of the mat
- Redstop™ non-slip backing to reduce mat slippage
- Beveled edges on all 4 sides
- Certified by the NFSI (National Floor Safety Institute)



WARNING: This product can expose you to chemicals including di-2-ethylhexyl phthalate and/or diisononyl phthalate which is known to the State of California to cause cancer, birth defects or reproductive harm. For more information, visit www.P65Warnings.ca.gov



MODEL: 976

SPECIFICATIONS

Stock Sizes	2'x3', 3'x5', 3'x12'
Roll Sizes	2'x75', 3'x75', 4'x75'
Thickness	3/4"
Cut Lengths	2', 3', and 4' widths (up to 75' long)
Colors	 Black  Black/Yellow

Performance: Good Better Best Superior

Wear Resistance	
Anti-fatigue Performance	
Slip Resistance	

APPLICATIONS

- Workstations
- Packaging Areas
- Assembly Lines
- Welding Areas



Anti-Fatigue



Anti-Slip



Custom



Insulation



Welding



NOTRAX®

5655 West 73rd Street
Chicago, IL 60638

PHONE: (800) 621-2802

FAX: (800) 322-7105

EMAIL: saleschicago@checkers-safety.com

www.notrax.com

A PRODUCT OF:



Justrite
Safety Group

Justrite Safety Group is the leading source of safety equipment for flammables and hazardous materials storage and handling, asset protection, environmental protection spill containment, absorbents, specialized chemical storage, cable management, safety showers and eye/face washes, matting, and vehicle safety equipment. Learn more at Justrite.com, Checkers-safety.com, and Notrax.com.