



Justrite Safety Group

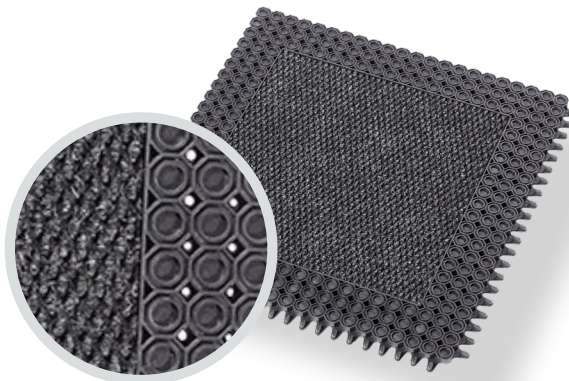
693 - MASTERFLEX®
HEEL-PROOF W/ CARPET
PRODUCT INFORMATION BROCHURE





For over 70 years, the name Notrax[®] has meant superior quality, service, and innovative products. Now this brand is a cornerstone of Justrite Safety Group, offering the widest selection of products to a variety of markets and applications including entrance mats, anti-fatigue/safety mats, and products designed specifically for use in professional food service environments. Notrax[®] offers a complete selection of floor matting options to meet any application requirement, quality expectation, and budget.

- **Track record of manufacturing high quality mats for over seventy years**
- **All products are manufactured in ISO certified facilities**
- **Notrax[®] offers anti-fatigue matting, entrance matting, safety matting, food service matting and specialty mats designed for a variety of industries**



693 - MASTERFLEX® HEEL-PROOF W/CARPET is an open construction with small octagonal ring design for drainage with a dense 45 oz charcoal berber carpet insert. The design blends the functionalities of a multi-zone entrance matting system with the ease of on-site modular installation into an effective matting solution. This full-service matting system offers a smooth and harmonious transition from outdoor to indoor. Offering all the benefits of a matting tile; it is easily installed, rearranged or replaced. What makes it revolutionary is the interlocking system that creates a durable and seamless connection that can be effortlessly installed without glue. The tiles cover sizeable areas easily and can be assembled on-site for installation in recessed frames in large entrances. MasterFlex™ High-Proofigh w/ Carpet is made from a durable natural rubber compound that is inherently resilient, anti-slip and withstands the heaviest foot traffic. The mat has excellent adherence and adapts to any surface while the raised studs underneath allow water to drain through, keeping the surface clean and dry. Its smooth surface makes it suitable for wheeled access including: carts, wheelchairs, suitcases, etc.



MODEL: 693

Material: Natural Rubber

Features and Benefits:

- Natural rubber compound
- Outdoor or indoor – heavy foot traffic
- Octagonal ring design with open construction and carpet insert
- 45 ounces of needle-punched yarn per square yard
- Suitable for use in extreme weather
- Tiny drainage holes diameter 3mm, specially designed for high heels
- For placement in interior or exterior recessed matwell frames
- Designed for pedestrian traffic. Not suitable for carts with extremely heavy loads
- 557 Masterflex™ Safety Ramps available

SPECIFICATIONS

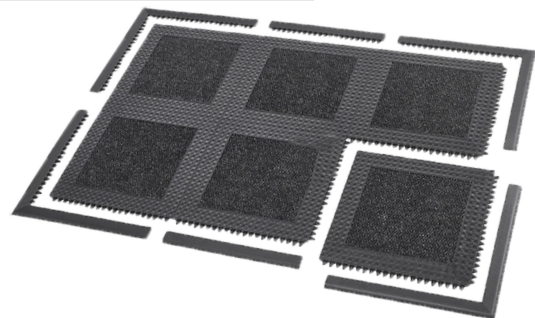
Stock Sizes	20"x20"
Thickness	1/2"
Colors	 Black

Performance: Good Better Best Superior

Water Retention	
Crush Resistance	
Soil Resistance	

APPLICATIONS

- Outdoor/indoor high traffic areas.









Cold Resistant Drainage Heavy Traffic Modular System Outdoor Use



NOTRAX®

5655 West 73rd Street
Chicago, IL 60638

PHONE: (800) 621-2802

FAX: (800) 322-7105

EMAIL: saleschicago@checkers-safety.com

www.notrax.com

A PRODUCT OF:



Justrite[™]
Safety Group

Justrite Safety Group is the leading source of safety equipment for flammables and hazardous materials storage and handling, asset protection, environmental protection spill containment, absorbents, specialized chemical storage, cable management, safety showers and eye/face washes, matting, and vehicle safety equipment. Learn more at Justrite.com, Checkers-safety.com, and Notrax.com.