



Justrite Safety Group

549 - SAFETY STANCE®

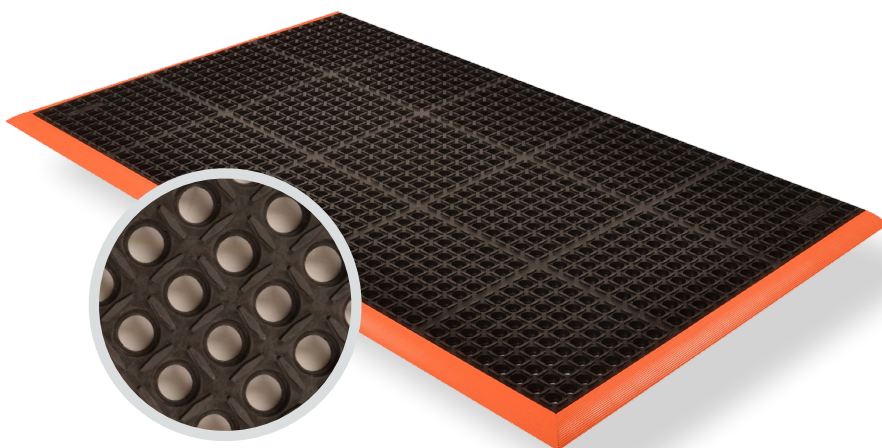
PRODUCT INFORMATION BROCHURE





For over 70 years, the name Notrax® has meant superior quality, service, and innovative products. Now this brand is a cornerstone of Justrite Safety Group, offering the widest selection of products to a variety of markets and applications including entrance mats, anti-fatigue/safety mats, and products designed specifically for use in professional food service environments. Notrax® offers a complete selection of floor matting options to meet any application requirement, quality expectation, and budget.

- **Track record of manufacturing high quality mats for over seventy years**
- **All products are manufactured in ISO certified facilities**
- **Notrax® offers anti-fatigue matting, entrance matting, safety matting, food service matting and specialty mats designed for a variety of industries**

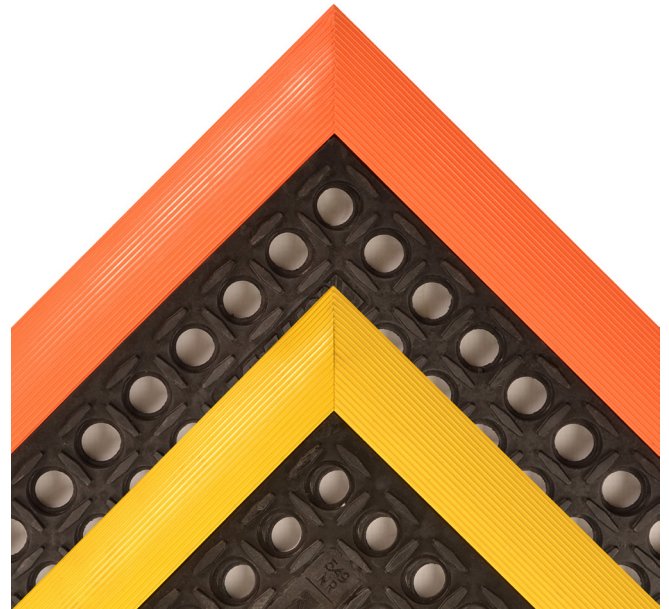


549 - SAFETY STANCE® is made from a grease resistant rubber compound to withstand many of the more commonly found industrial cutting oils and chemicals. Particularly well suited for wet or dry work areas, Safety Stance® features a large hole drainage system with a mini-diamond studded top surface to minimize slippage. Permanently affixed beveled edges are made from a 100% Nitrile rubber compound offering the same resistance to oils/chemicals as the mat.

Material: Rubber



Features and Benefits:

- Resilient natural rubber compound withstands many common industrial cutting oils and chemicals
- Large hole configuration facilitates drainage and resists clogging
- Raised mini-diamond studs on top surface minimize slippage
- Colored beveled borders are permanently affixed to the mat to prevent swelling/curling.
- Borders are made from 100% nitrile rubber
- Beveled edges available on 3 or 4 sides



MODEL: 549

SPECIFICATIONS

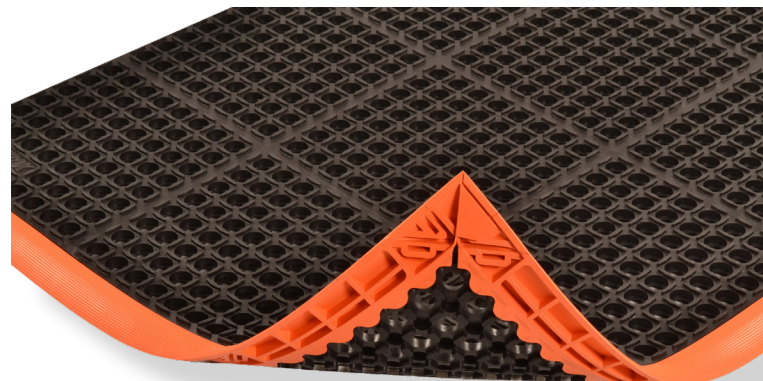
Stock Sizes	3-sided borders: 26"x40", 38"x40", 38"x64", 38"x124" 4-sided borders: 28"x40", 40"x40", 40"x64", 40"x124"		
Thickness	7/8"		
Colors			
	Black/ Orange	Black/ Yellow	

Performance:

	Good	Better	Best	Superior
Wear Resistance				
Anti-fatigue Performance				
Slip Resistance				

APPLICATIONS

- All heavy Industrial environments and work cells that require worker protection from fatigue, spillage of liquids, heavy cart traffic.



Cleaning



Anti-Fatigue



Anti-Slip



Drainage



Oil/Grease Resistant

TESTING DATA

Test	Test Description	Results
Compression Deflection	Test specimen is subjected to varying compression load levels and the resulting deflection was measured. The greater the deflection, the better the anti-fatigue properties. (Inches)	.871" (40 lbs/sq. inch)
Coefficient of Friction ASTM C1028-96	A neolite heel assembly with a predetermined load is pulled horizontally with a dynamometer to measure the force required to cause the assembly to slip.	.93
Elongation ASTM D412	Test specimen is stretched at a specified rate until breaking point. The results are measured in % of size increase at breaking point.	258.2% (average of 5 specimens)
Critical Radiant Flux ASTM E648-94A	The test result is an average critical radiant flux (watts/square cm) which indicates the level of radiant heat energy required to sustain flame propagation in the flooring system.	33

*Testing performed by an independent test laboratory.

NOTRAX®

5655 West 73rd Street
Chicago, IL 60638

PHONE: (800) 621-2802

FAX: (800) 322-7105

EMAIL: saleschicago@checkers-safety.com

www.notrax.com



A PRODUCT OF:



Justrite Safety Group is the leading source of safety equipment for flammables and hazardous materials storage and handling, asset protection, environmental protection spill containment, absorbents, specialized chemical storage, cable management, safety showers and eye/face washes, matting, and vehicle safety equipment. Learn more at Justrite.com, Checkers-safety.com, and Notrax.com.