

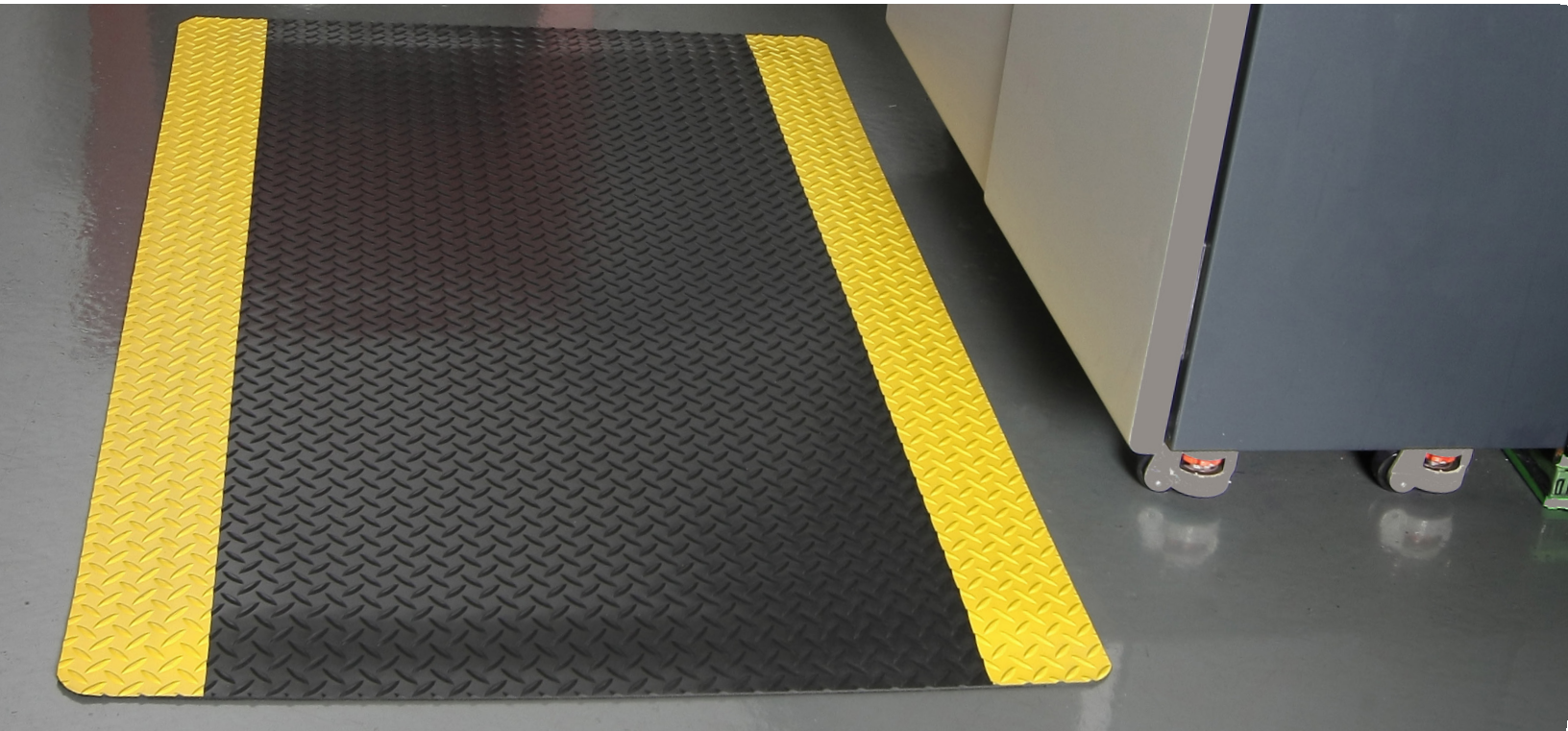


Justrite Safety Group

# 510 - DIAMOND TUFF™ MAX

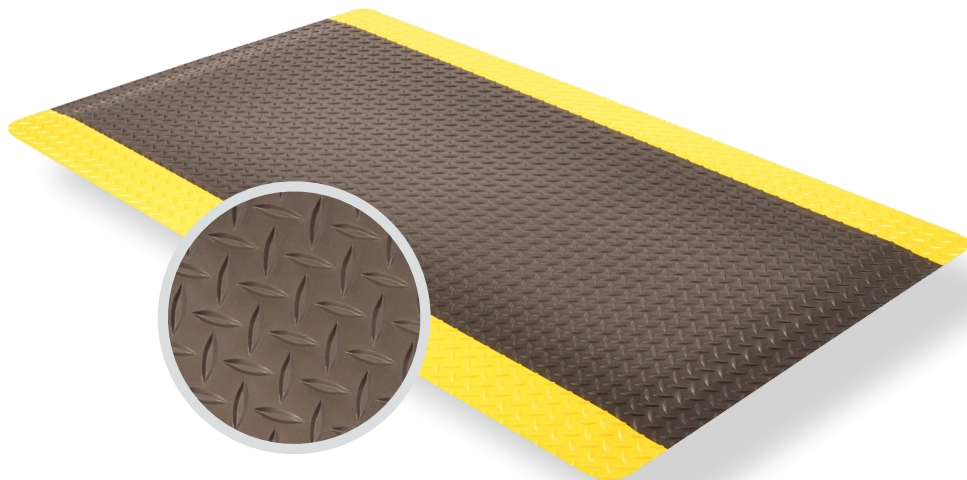
PRODUCT INFORMATION BROCHURE





For over 70 years, the name Notrax<sup>®</sup> has meant superior quality, service, and innovative products. Now this brand is a cornerstone of Justrite Safety Group, offering the widest selection of products to a variety of markets and applications including entrance mats, anti-fatigue/safety mats, and products designed specifically for use in professional food service environments. Notrax<sup>®</sup> offers a complete selection of floor matting options to meet any application requirement, quality expectation, and budget.

- **Track record of manufacturing high quality mats for over seventy years**
- **All products are manufactured in ISO certified facilities**
- **Notrax<sup>®</sup> offers anti-fatigue matting, entrance matting, safety matting, food service matting and specialty mats designed for a variety of industries**



**510 - DIAMOND TUFF™ MAX** is a durable anti-fatigue/anti-slip mat with a vinyl diamond plate top surface that provides sure footing and a full 1" thick PVC base for maximum comfort. Available in both workstation sizes and full rolls for applications that require a longer mat, the non-directional diamond plate top surface is easy to sweep or damp mop clean.

**Material:** Vinyl Surface With Dense Closed PVC Foam Base

**Features and Benefits:**



- Durable diamond pattern vinyl laminate top surface for added traction
- Dense closed cell PVC foam base provides added cushioning comfort
- Beveled edges on all 4 sides
- Available spliced in widths wider than 5' up to 12' upon request
- Available in lengths up to 150' in length in 1 section upon request

**⚠ WARNING:** This product can expose you to chemicals including di-2-ethylhexyl phthalate and/or diisononyl phthalate which is known to the State of California to cause cancer, birth defects or reproductive harm. For more information, visit [www.P65Warnings.ca.gov](http://www.P65Warnings.ca.gov)



MODEL: 510

## SPECIFICATIONS

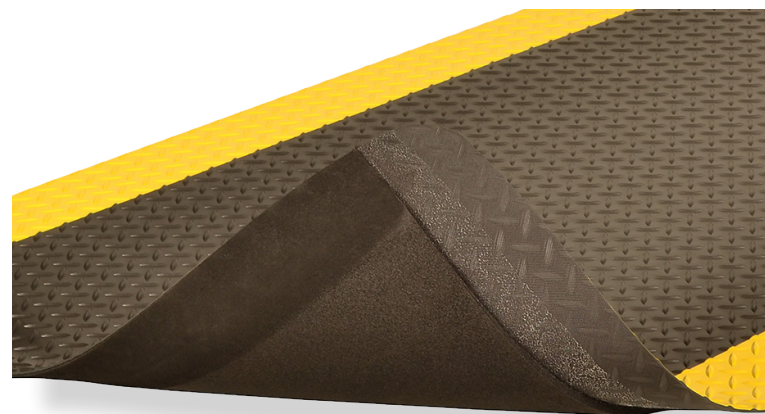
Stock Sizes	2'x3', 3'x5', 3'x12'
Roll Sizes	2'x75', 3'x75', 4'x75', 5'x75'
Thickness	1"
Cut Lengths	2', 3', 4' and 5' widths (up to 75' long)
Colors	 Black  Black/Yellow

**Performance:**      Good      Better      Best      Superior

Wear Resistance			
Anti-fatigue Performance			
Slip Resistance			

**APPLICATIONS**

- Dry Work Areas
- Packaging Areas
- Assembly Lines
- Long Aisle Runs



Anti-Fatigue



Anti-Slip



Cut Lengths



Insulation

# TESTING DATA

Test	Test Description	Results
ASTM C1028-96	Static Coefficient of Friction	Dry 0.480
Compression Deflection	Compression Deflection	@20 lbs/sq. In. 0.400 @40 lbs/sq. In. 0.557
ASTM D2240-02	Durometer (Shore A)	80
ASTM D1004-94a-03	Tear Strength (Results measured in force to initiate tearing - in lbs.)	51.9 lbs.
ASTM D3884-01	Abrasion Resistance (Results measured in weight loss - %)	@ 1,000 cycles (0.2%)
ASTM E648-08	Critical Radiant Flux	0.53 watts/sq. cm.
CPSC FF 1-70 ASTM D-2859	Surface Flammability of Carpets and Rugs Ignition Characteristics - Finished Textile Floor Covering Material	Pass

\*Testing performed by an independent test laboratory.

## NOTRAX®

5655 West 73rd Street  
Chicago, IL 60638

**PHONE:** (800) 621-2802

**FAX:** (800) 322-7105

**EMAIL:** saleschicago@checkers-safety.com

www.notrax.com



A PRODUCT OF:



Justrite Safety Group is the leading source of safety equipment for flammables and hazardous materials storage and handling, asset protection, environmental protection spill containment, absorbents, specialized chemical storage, cable management, safety showers and eye/face washes, matting, and vehicle safety equipment. Learn more at Justrite.com, Checkers-safety.com, and Notrax.com.