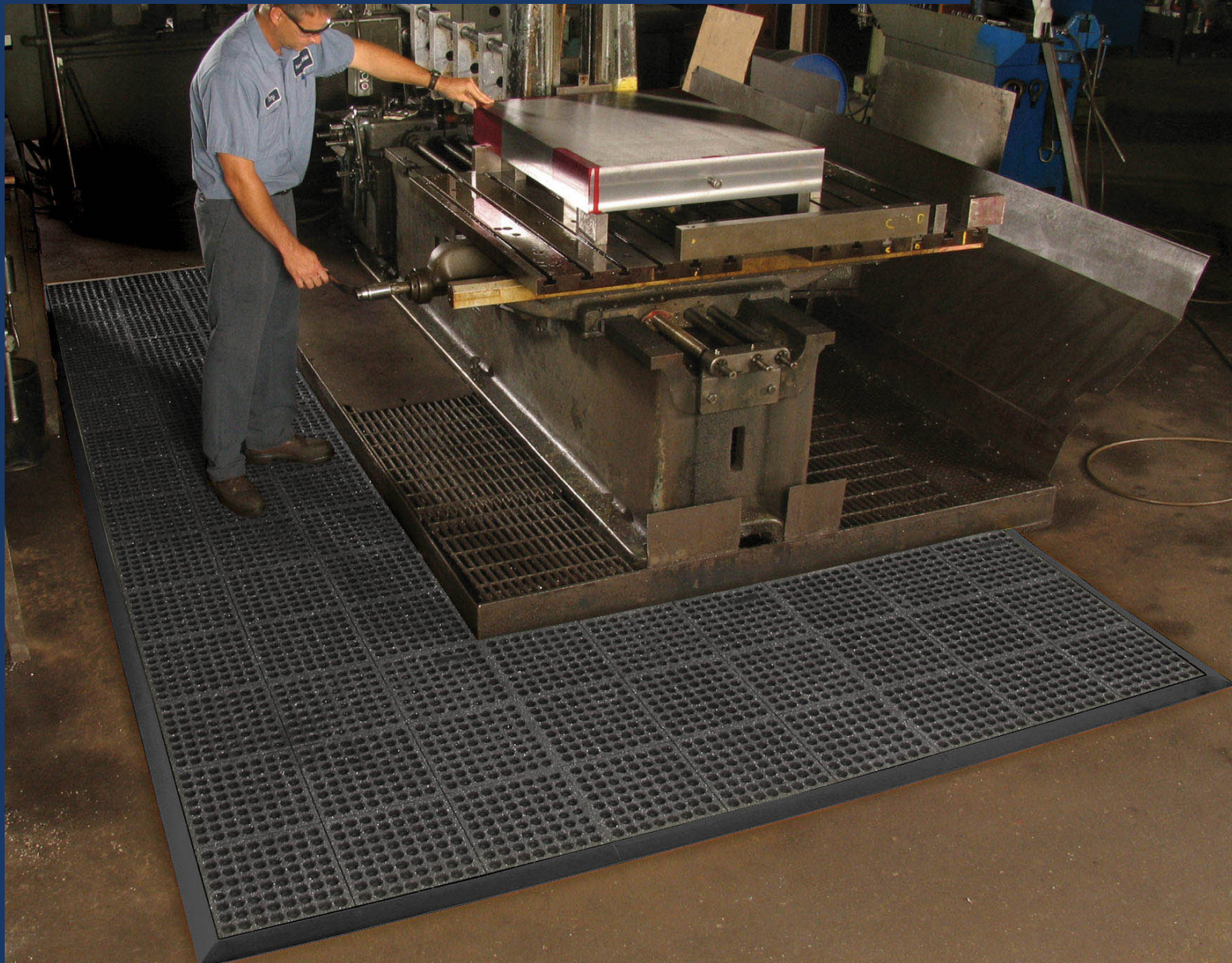
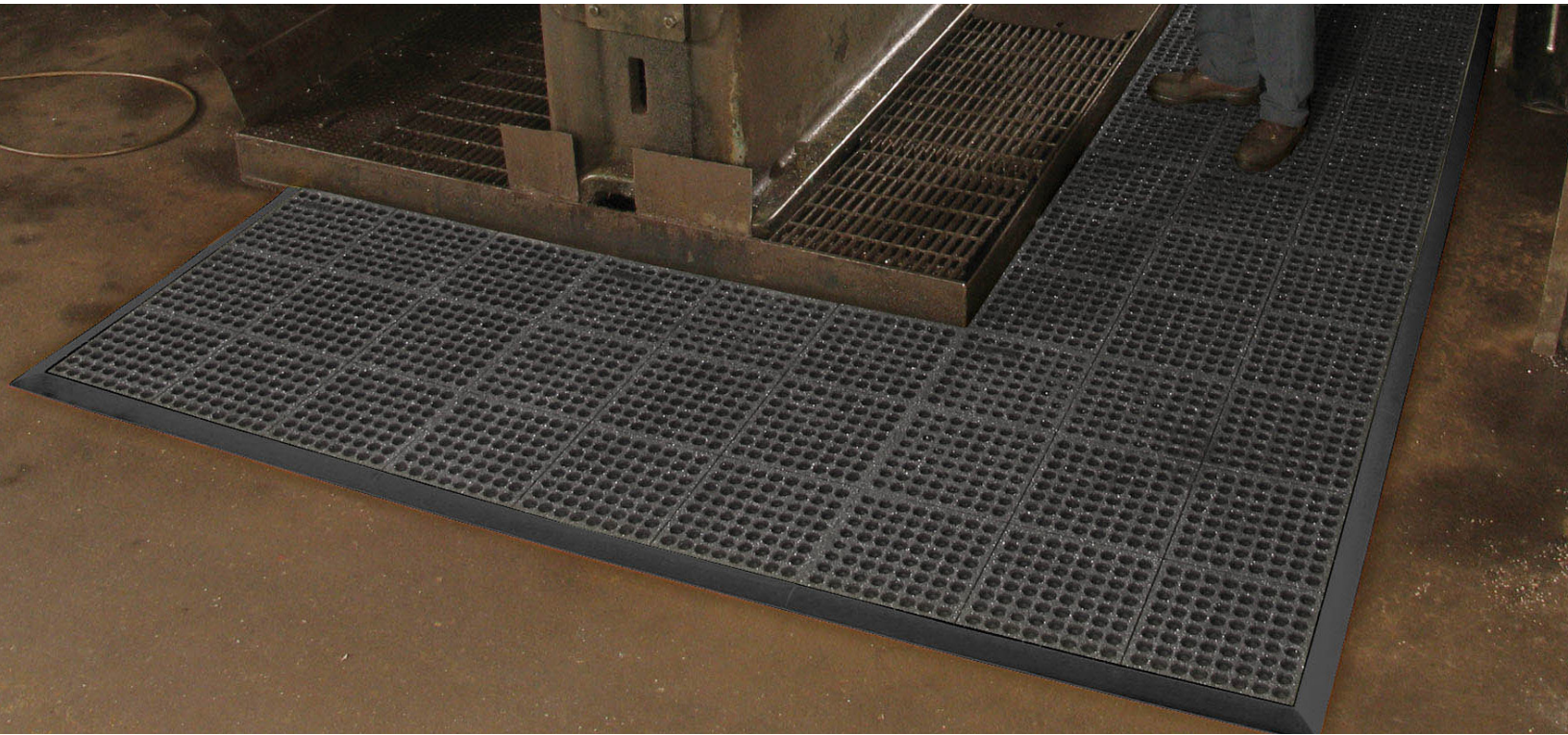




Justrite Safety Group

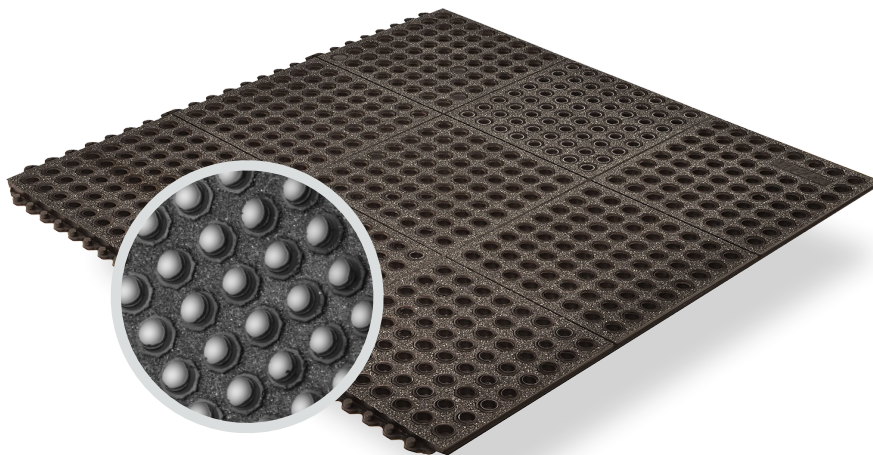
505 - GRIT-STEP™
PRODUCT INFORMATION BROCHURE





For over 70 years, the name Notrax[®] has meant superior quality, service, and innovative products. Now this brand is a cornerstone of Justrite Safety Group, offering the widest selection of products to a variety of markets and applications including entrance mats, anti-fatigue/safety mats, and products designed specifically for use in professional food service environments. Notrax[®] offers a complete selection of floor matting options to meet any application requirement, quality expectation, and budget.

- **Track record of manufacturing high quality mats for over seventy years**
- **All products are manufactured in ISO certified facilities**
- **Notrax[®] offers anti-fatigue matting, entrance matting, safety matting, food service matting and specialty mats designed for a variety of industries**

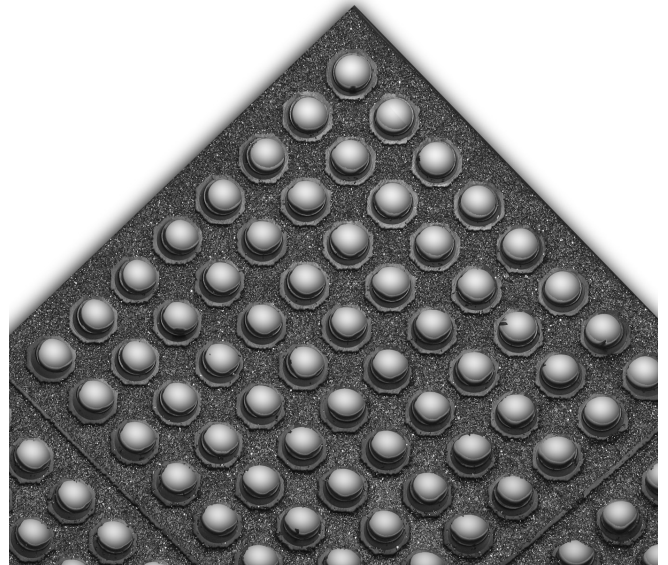


505 - GRIP-STEP™ is a modular anti-fatigue matting system made with a general purpose rubber compound with a drainage top anti-slip surface texture and a multi-nib backing for comfort and ergonomic support of the mat. Grip-Step™ has a silicon carbide grit surface for extreme traction in the harshest of work environments. Large holes provide excellent drainage and aeration leaving a dry, clean work area.

Material: General Purpose Rubber

Features and Benefits:

- Rubber compound and unique multi-nib support design offers fatigue relief
- Large hole drainage design keeps moisture and debris free away
- Easy to snap tog system for on-site custom work station platforms
- Silicon Carbide grit surface
- 551 M.D. Ramp System® and 552 extra wide M.D.-X Ramp System™ available



MODEL: 505

⚠ WARNING: This product can expose you to beryllium which is known to the State of California to cause cancer. For more information, visit www.P65Warnings.ca.gov

SPECIFICATIONS

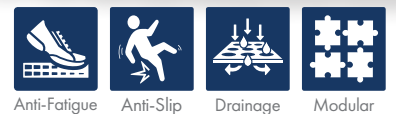
Stock Sizes	3'x3'
Thickness	3/4"
Colors	 Black

Performance:

	Good	Better	Best	Superior
Wear Resistance	██████████		██████████	██████████
Anti-fatigue Performance	██████████		██████████	██████████
Slip Resistance	██████████			██████████

APPLICATIONS

- Wet environments where comfort, durability, and added traction is critical.



TESTING DATA

Test	Test Description	Results
ASTM C-1028-96	Static Coefficient of Friction	Dry - 0.79 Wet - 0.77
ASTM D-395	Compression Set	@25% / -2.51%
ASTM D-412	Tensile/Elongation	Tensile - Min. 340 psi Elongation - Min. 300%
ASTM D-624	Tear Strength (Results measured in force to initiate tearing - in lbs.)	Min. 80 lbs/in.
ASTM D-2240	Durometer	50
ASTM D-3884	Abrasion Resistance (Results measured in weight loss - %)	1000 cycles - Max. 1.50%
CPSA FF 1-70 ASTM D-2859	Surface Flammability of Carpets and Rugs Ignition Characteristics - Finished Textile Floor Covering Material	Pass
ASTM D-1171	Ozone	Slight Cracking

*Testing performed by an independent test laboratory.

NOTRAX®

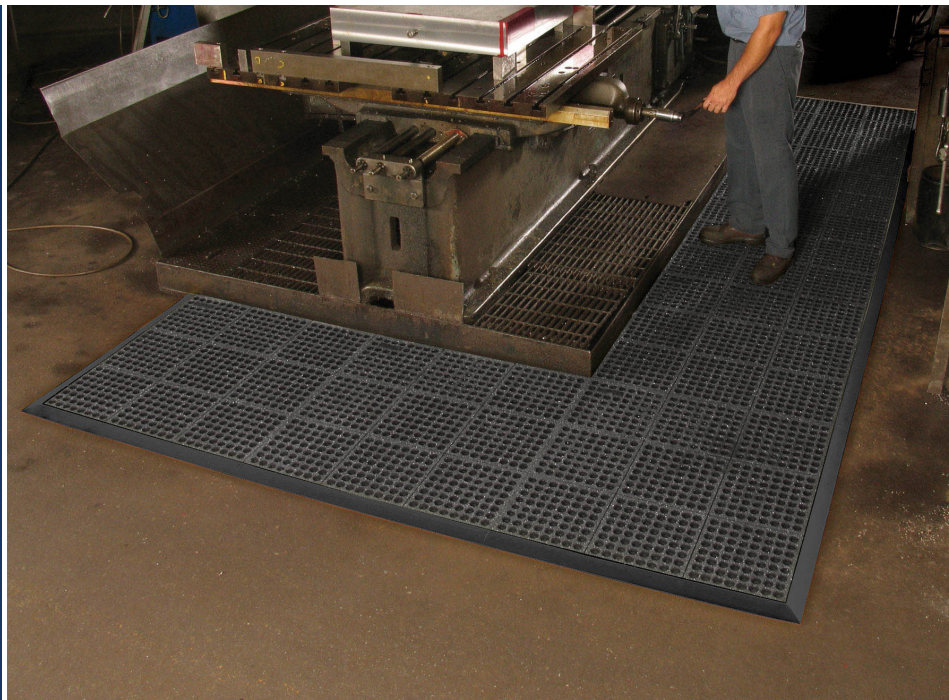
5655 West 73rd Street
Chicago, IL 60638

PHONE: (800) 621-2802

FAX: (800) 322-7105

EMAIL: saleschicago@checkers-safety.com

www.notrax.com



A PRODUCT OF:



Justrite Safety Group is the leading source of safety equipment for flammables and hazardous materials storage and handling, asset protection, environmental protection spill containment, absorbents, specialized chemical storage, cable management, safety showers and eye/face washes, matting, and vehicle safety equipment. Learn more at Justrite.com, Checkers-safety.com, and Notrax.com.