



Justrite Safety Group

463 - SKYMASTER® HD ESD

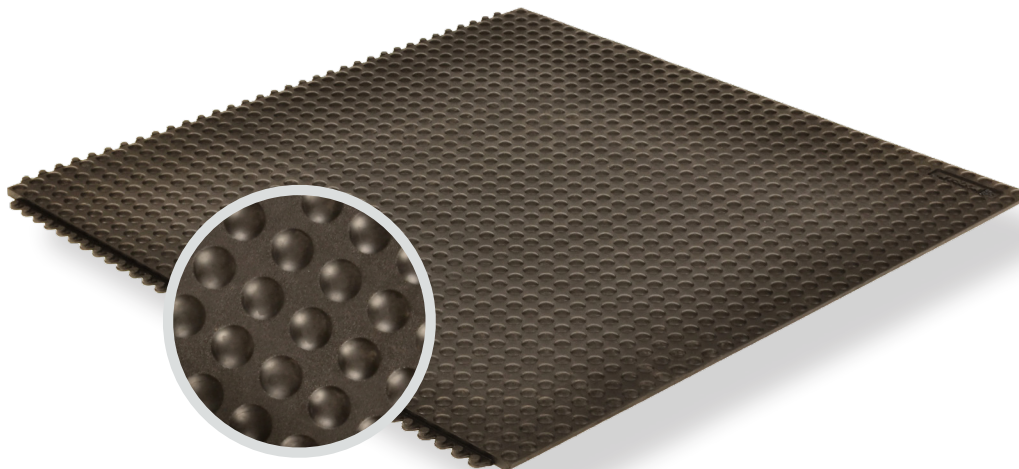
PRODUCT INFORMATION BROCHURE





For over 70 years, the name Notrax[®] has meant superior quality, service, and innovative products. Now this brand is a cornerstone of Justrite Safety Group, offering the widest selection of products to a variety of markets and applications including entrance mats, anti-fatigue/safety mats, and products designed specifically for use in professional food service environments. Notrax[®] offers a complete selection of floor matting options to meet any application requirement, quality expectation, and budget.

- **Track record of manufacturing high quality mats for over seventy years**
- **All products are manufactured in ISO certified facilities**
- **Notrax[®] offers anti-fatigue matting, entrance matting, safety matting, food service matting and specialty mats designed for a variety of industries**

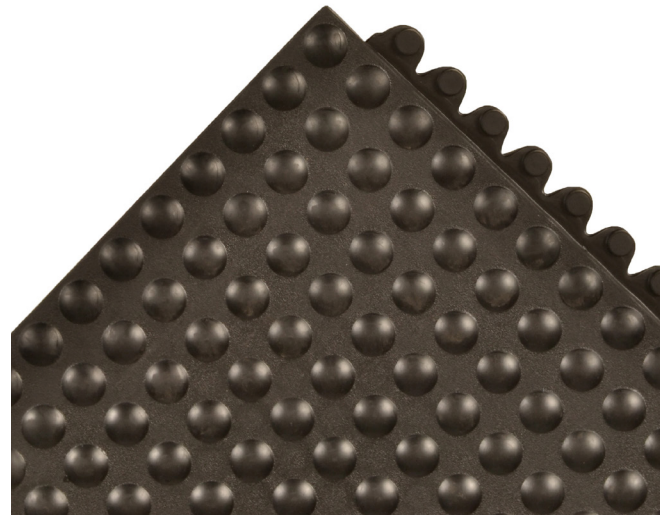


463 - SKYMASTER® HD ESD is an Electro Static Discharge (ESD) protective mat that is formulated to drain static electricity from workers to safeguard against static shocks and protect equipment. Skymaster® HD ESD is heavy duty natural rubber compound mat for industrial strength applications. Snap together tiles of 3'x3' can be easily assembled for coverage of large areas or individual workstations. Ergonomic benefit derived from a ½" thick worker platform with a bubble pattern for maximum fatigue relief in dry industrial environments. The unique design and craftsmanship make the mat easy to handle and easy to install on site. A tooled grid of 11x11" sections on the underside of the mat makes further customization quick and easy. Available beveled edges prevent tripping and allow inside and outside corners. Range of accessories including Skymaster® HD Yellow Safety line™ and Skymaster® HD i-Curve™ and Skymaster® HD o-Curve™ series.

Material: Natural Rubber

Features and Benefits:

- Resilient natural rubber compound and unique support design offers exceptional fatigue relief
- ESD Dissipative, measured resistance $10^6 - 10^9 \Omega$
- Bubble top surface for added comfort that is easy to clean
- Easy to snap together mats on-site for custom work station platforms
- Compatible with any of the Skymaster® HD family of mats
- #461 Skymaster® HD Ramps and #469 Safety Line available
- Grounding cord available, not required



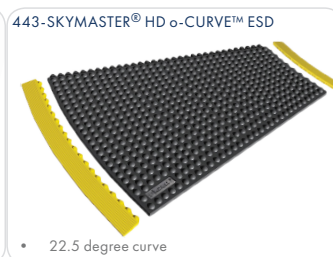
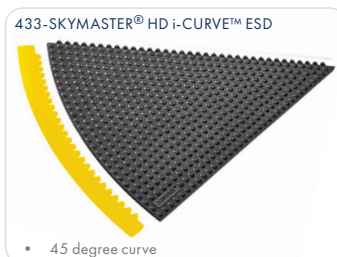
MODEL: 463

SPECIFICATIONS

Stock Sizes	3'x3'
Thickness	5/8"
Colors	 Black

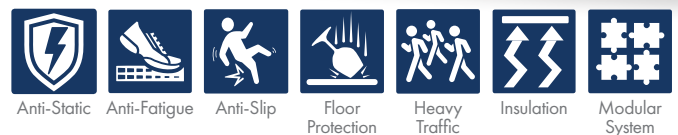
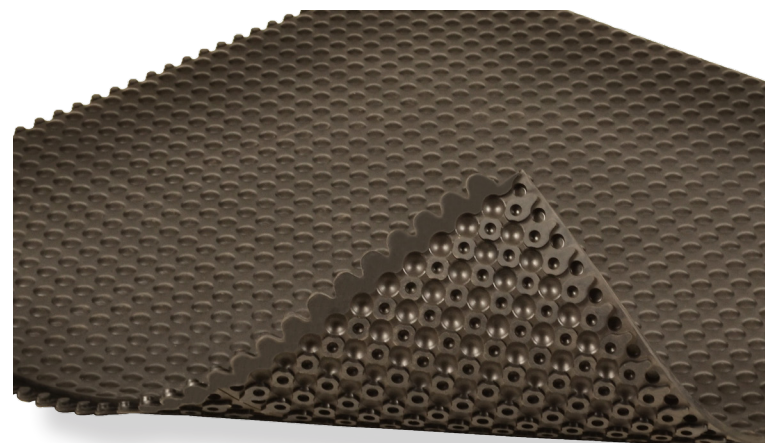
Performance:	Good	Better	Best	Superior
Wear Resistance	████████████████████			██████████
Anti-Slip	████████████████████			██████████
Anti-Fatigue	████████████████████			██████████

SKYMASTER® - Curves



APPLICATIONS

- Heavy Duty - Use where Electro Static Discharge (ESD) could be present.



TESTING DATA

Test	Test Description	Results
ASTM D3884-92	Abrasion Resistance ASTM D3884-01 (Results measured in weight loss - %)	1000 Cycles 0.824
DIN 53455-6-4	Elongation	210%
ASTM D2240-02	Hardness	67 Shore A
DIN 51130 en BG-BGR181	Anti-slip	R9
ASTM D2859	Flammability Test	5 min.

*Testing performed by an independent test laboratory.

NOTRAX®

5655 West 73rd Street
Chicago, IL 60638

PHONE: (800) 621-2802

FAX: (800) 322-7105

EMAIL: saleschicago@checkers-safety.com

www.notrax.com



A PRODUCT OF:



Justrite Safety Group is the leading source of safety equipment for flammables and hazardous materials storage and handling, asset protection, environmental protection spill containment, absorbents, specialized chemical storage, cable management, safety showers and eye/face washes, matting, and vehicle safety equipment. Learn more at Justrite.com, Checkers-safety.com, and Notrax.com.