



Justrite Safety Group

447 - COMFORT-EZE™

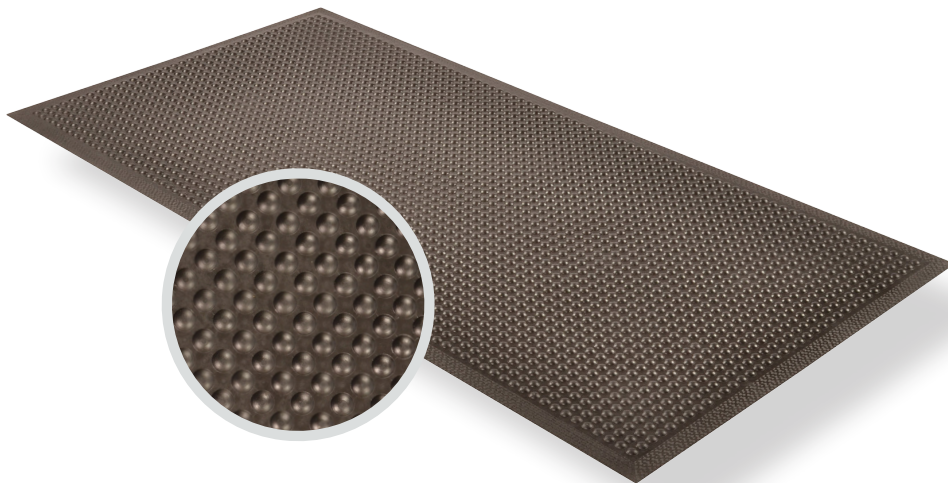
PRODUCT INFORMATION BROCHURE





For over 70 years, the name Notrax[®] has meant superior quality, service, and innovative products. Now this brand is a cornerstone of Justrite Safety Group, offering the widest selection of products to a variety of markets and applications including entrance mats, anti-fatigue/safety mats, and products designed specifically for use in professional food service environments. Notrax[®] offers a complete selection of floor matting options to meet any application requirement, quality expectation, and budget.

- **Track record of manufacturing high quality mats for over seventy years**
- **All products are manufactured in ISO certified facilities**
- **Notrax[®] offers anti-fatigue matting, entrance matting, safety matting, food service matting and specialty mats designed for a variety of industries**

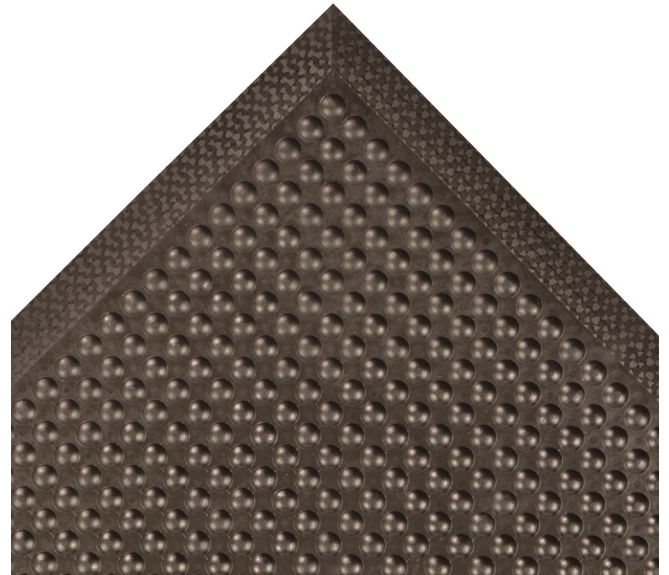


447 - COMFORT-EZE™ is constructed with a unique solid rubber design, Comfort-Eze™ stimulates worker comfort and promotes product longevity. Offset bubbles on both the top and bottom of the mat provides flex and creates airflow resulting in maximum comfort for workers required to be on their feet for long periods of time. Competitive products feature only a flat or hollowed bottom which reduces the comfort of the mat. Although intended for use in dry environments, the top surface design is easy to wipe clean and the durable rubber compound is highly resistant to many cleaners and disinfectants so occasional spills can be cleaned up quickly and easily. Molded beveled edges on all four sides eliminates trip hazards by allowing for easy access onto and off the mat.

Material: Rubber


Features and Benefits:

- Long-lasting rubber compound
- Rubber molded, anti-fatigue mat
- Bubbles are molded on an offset on the top and bottom of the mat to maximize flex and create air flow, all to enhance the ergonomic benefit
- Durable rubber top surface easy to wipe clean using most cleaners and disinfectants
- Beveled edges on all 4 sides



MODEL: 447

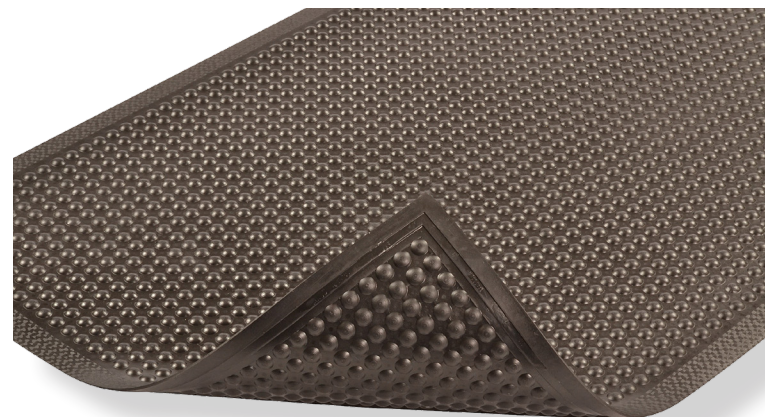
SPECIFICATIONS

Stock Sizes	24"x36", 30"x60", 30"x10' *Consists of multiple mats bonded together
Thickness	3/8"
Colors	 Black

Performance:	Good	Better	Best	Superior
Wear Resistance				
Anti-fatigue Performance				
Slip Resistance				

APPLICATIONS

- Packaging Stations
- Shipping Areas
- Inspection Areas
- Dry Areas



TESTING DATA

Test	Test Description	Results
Compression Deflection	Test specimen is subjected to varying compression load levels and the resulting deflection was measured. The greater the deflection, the better the anti-fatigue properties. (Inches)	.067" (20 lbs/sq. inch) .090" (40 lbs/sq. inch)
Coefficient of Friction ASTM C1028-96	A neolite heel assembly with a predetermined load is pulled horizontally with a dynamometer to measure the force required to cause the assembly to slip.	.80
Abrasion Resistance ASTM D3884-01	Test specimen is subjected to the rubbing action of two abrading wheels under controlled conditions. Results measured in Weight loss (Grams)	8.58 Grams
Critical Radiant Flux ASTM E648-94A	The test result is an average critical radiant flux (watts/square cm) which indicates the level of radiant heat energy required to sustain flame propagation in the flooring system.	.30 watts/square cm

*Testing performed by an independent test laboratory.

NOTRAX®

5655 West 73rd Street
Chicago, IL 60638

PHONE: (800) 621-2802

FAX: (800) 322-7105

EMAIL: saleschicago@checkers-safety.com

www.notrax.com



A PRODUCT OF:



Justrite Safety Group is the leading source of safety equipment for flammables and hazardous materials storage and handling, asset protection, environmental protection spill containment, absorbents, specialized chemical storage, cable management, safety showers and eye/face washes, matting, and vehicle safety equipment. Learn more at Justrite.com, Checkers-safety.com, and Notrax.com.