

TESTING DATA

Test	Test Description	Results
-	Compression Deflection	@ 20 lbs/in2: 0.302 @ 40 lbs/in2: 0.445
ASTM D-1004-94a-03	Tear Resistance(Measured in lbs.)	13.1 lbs.
ASTM D-2240	Durometer (Shore A)	10
ASTM D-3884	Abrasion Resistance	@ 500 cycles: 14.8% @ 1000 cycles: 25.7%
ASTM D-2859/CPSC FF-170	Surface Flammability/Carpets and Rugs	Pass
ASTM D-1894-01	Modified Slip Test: Avg. C.O.F. (Coefficient of Friction)	VCT: 0.73 Painted Concrete: 0.73 Vinyl Flooring: 0.66 Epoxy Painted Concrete: 0.83
ASTM D-412	Breaking Load & Elongation	Breaking Load - 45.4 lbs/in2 Elongation - 103.04%
ASTM E-648	Critical Radiant Flux	Watts per Cm2: 0.67

*Testing performed by an independent test laboratory.

NOTRAX®

5655 West 73rd Street
Chicago, IL 60638

PHONE: (800) 621-2802

FAX: (800) 322-7105

EMAIL: saleschicago@checkers-safety.com

www.notrax.com



A PRODUCT OF:



Justrite Safety Group is the leading source of safety equipment for flammables and hazardous materials storage and handling, asset protection, environmental protection spill containment, absorbents, specialized chemical storage, cable management, safety showers and eye/face washes, matting, and vehicle safety equipment. Learn more at Justrite.com, Checkers-safety.com, and Notrax.com.



Justrite Safety Group

440 - SUPERFOAM™ COMFORT

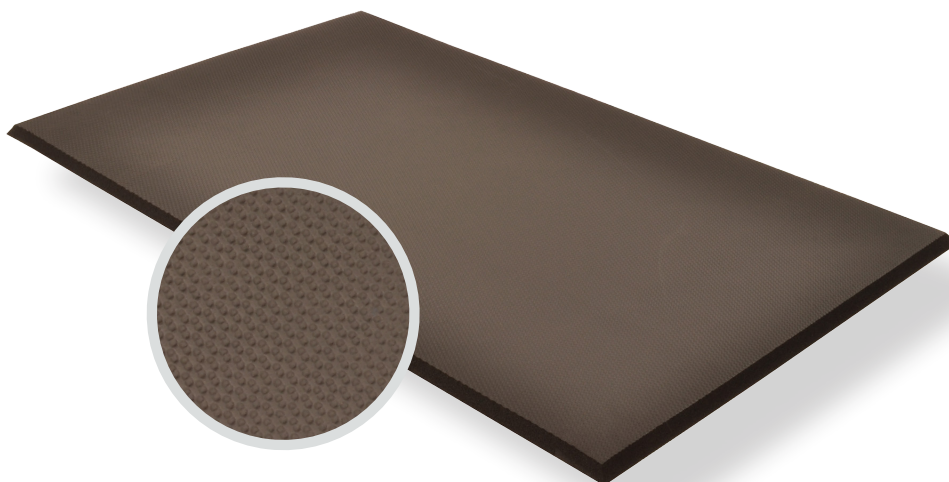
PRODUCT INFORMATION BROCHURE





For over 70 years, the name Notrax[®] has meant superior quality, service, and innovative products. Now this brand is a cornerstone of Justrite Safety Group, offering the widest selection of products to a variety of markets and applications including entrance mats, anti-fatigue/safety mats, and products designed specifically for use in professional food service environments. Notrax[®] offers a complete selection of floor matting options to meet any application requirement, quality expectation, and budget.

- **Track record of manufacturing high quality mats for over seventy years**
- **All products are manufactured in ISO certified facilities**
- **Notrax[®] offers anti-fatigue matting, entrance matting, safety matting, food service matting and specialty mats designed for a variety of industries**

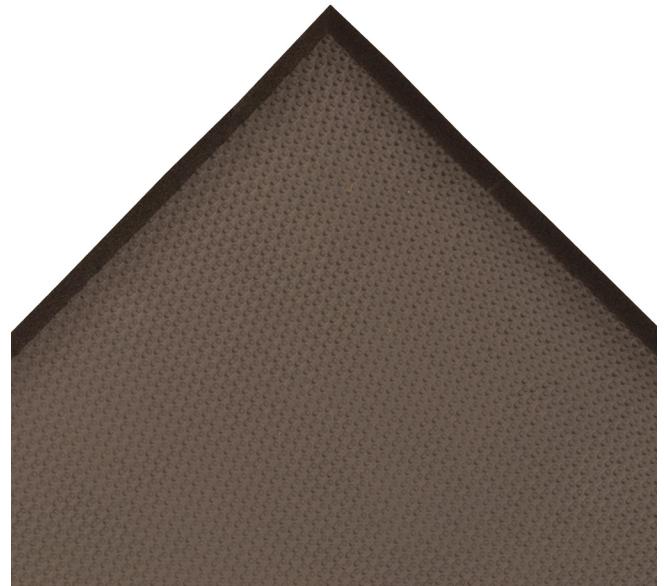


440 - SUPERFOAM™ COMFORT takes comfort and ergonomic support to the next level. It's made from a full 3/4" thick softer PVC/ Nitrile rubber foam blend that offers greater resistance to a variety of chemicals, cutting fluids, greases, oils and animal and vegetable fats. The high-density materials in Superfoam™ Comfort incorporate millions of tiny closed cells that won't absorb liquids. It's extreme comfort and lightweight make it the perfect mat for use in areas where mats are regularly moved for cleaning.

Material: Nitrile/PVC Foam Blend

Features and Benefits:

- Extra soft material for greater comfort and exceptional memory
- Highly resistant to greases, oils, and animal & vegetable fats
- High density material incorporates millions of tiny closed cells that won't absorb liquids
- Aggressive texture on both top and bottom for added traction while keeping mat in place
- Non-allergenic, silicone - free compound
- Beveled edges on all 4 sides




MODEL: 440

SPECIFICATIONS

APPLICATIONS

- Dish washing Stations
- Bar Areas
- Cooking Lines
- Service Counters

Stock Sizes	3'x2', 3'x3', 3'x5', 3'x8', 4'x6'
Roll Sizes	2'x75', 3'x75', 4'x75'
Thickness	3/4"
Cut Lengths	2', 3', and 4' widths (up to 75' long)
Colors	 Black

Performance:

	Good	Better	Best	Superior
Wear Resistance				
Anti-fatigue Performance				
Slip Resistance				

