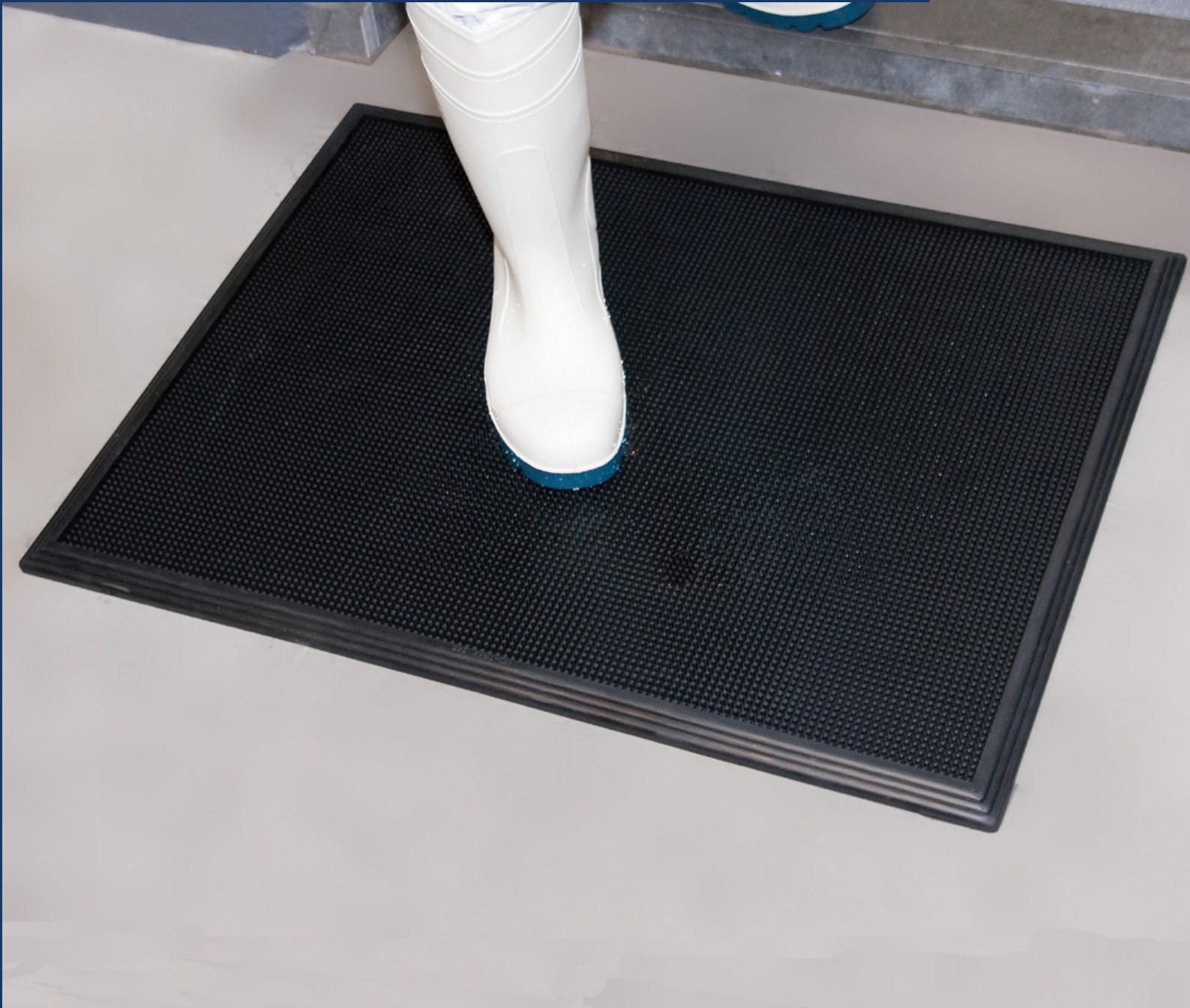
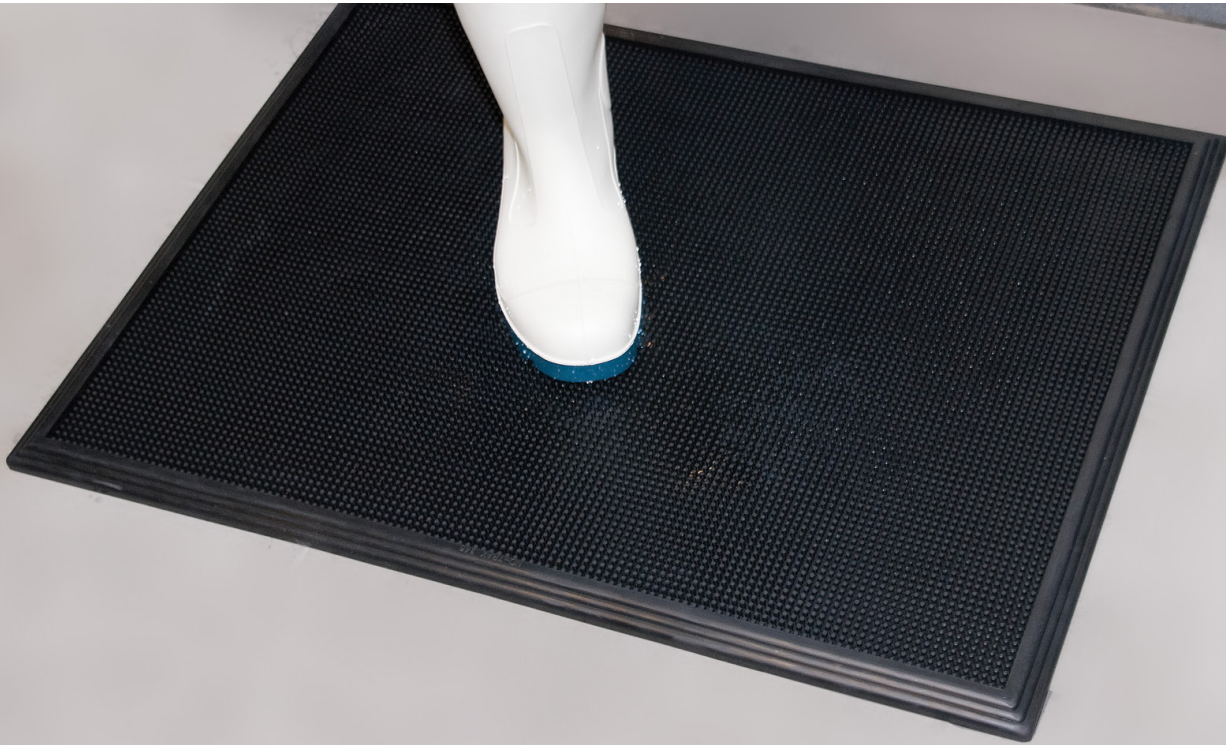




Justrite Safety Group

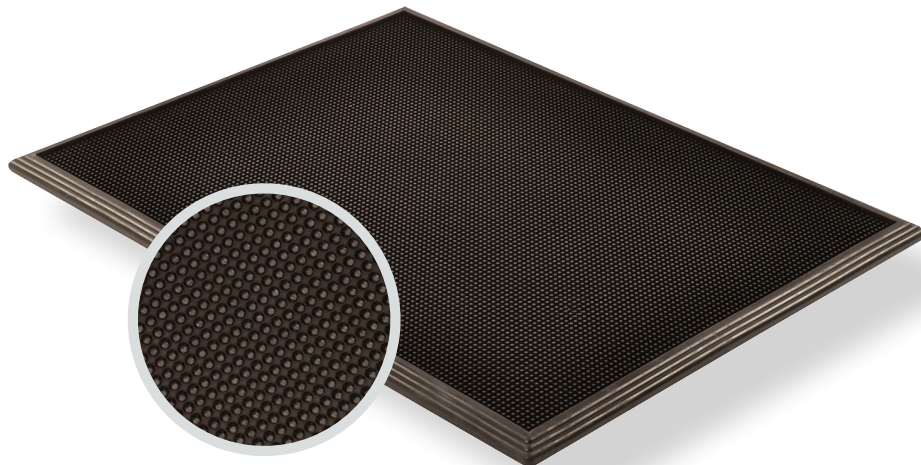
**346 - SANI-TRAX®**  
PRODUCT INFORMATION BROCHURE





For over 70 years, the name Notrax<sup>®</sup> has meant superior quality, service, and innovative products. Now this brand is a cornerstone of Justrite Safety Group, offering the widest selection of products to a variety of markets and applications including entrance mats, anti-fatigue/safety mats, and products designed specifically for use in professional food service environments. Notrax<sup>®</sup> offers a complete selection of floor matting options to meet any application requirement, quality expectation, and budget.

- **Track record of manufacturing high quality mats for over seventy years**
- **All products are manufactured in ISO certified facilities**
- **Notrax<sup>®</sup> offers anti-fatigue matting, entrance matting, safety matting, food service matting and specialty mats designed for a variety of industries**



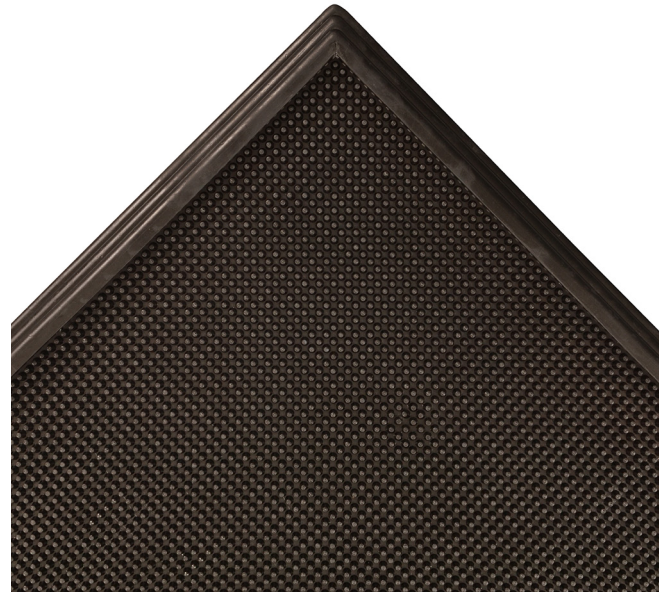
**346 - SANI-TRAX®** is an entrance disinfectant mat that cleans and sanitizes shoes at entrances to sensitive areas such as food processing plants or laboratories. Flexible fingers provide an automatic scrubbing action that dislodges contaminants from footwear. A thick rubber border allows the mat to hold up to a gallon of disinfectant solution and as traffic passes, the rubber tips bend to immerse the soles of shoes in the disinfectant solution. A tough rubber compound is designed to resist most chemicals and variations in temperature, while suction cups on the underside of the mat keep it in place.

**Material:** Natural Rubber Compound

**Features and Benefits:**

- Tough rubber compound resists most chemicals and variations in temperature
- Overall mat thickness is 3/4" and holds up to one gallon of sanitizing solution.
- Thick containment border stands 1/4" higher than finger scrapers to contain disinfectant and contaminants
- Thousands of flexible rubber fingers provide scrubbing action
- Suction cups on underside help to minimize mat movement
- Helps limit the spread of contaminants on non food contact surfaces. i.e. floors
- Containment wall height: 3/4"

**⚠ WARNING:** This product can expose you to di-2-ethylhexyl phthalate which is known to the State of California to cause cancer, birth defects or reproductive harm. For more information, visit [www.P65Warnings.ca.gov](http://www.P65Warnings.ca.gov)



MODEL: 346

## SPECIFICATIONS

Stock Sizes	24"x32"
Thickness	3/4"
Colors	 Black

**APPLICATIONS**

- Doorways
- Starter Rooms
- Agriculture
- Laboratories



Cleaning



Food Processing



**NOTRAX®**

5655 West 73rd Street  
Chicago, IL 60638

**PHONE:** (800) 621-2802

**FAX:** (800) 322-7105

**EMAIL:** saleschicago@checkers-safety.com

[www.notrax.com](http://www.notrax.com)

A PRODUCT OF:



**Justrite**  
Safety Group

Justrite Safety Group is the leading source of safety equipment for flammables and hazardous materials storage and handling, asset protection, environmental protection spill containment, absorbents, specialized chemical storage, cable management, safety showers and eye/face washes, matting, and vehicle safety equipment. Learn more at [Justrite.com](http://Justrite.com), [Checkers-safety.com](http://Checkers-safety.com), and [Notrax.com](http://Notrax.com).