



Justrite Safety Group

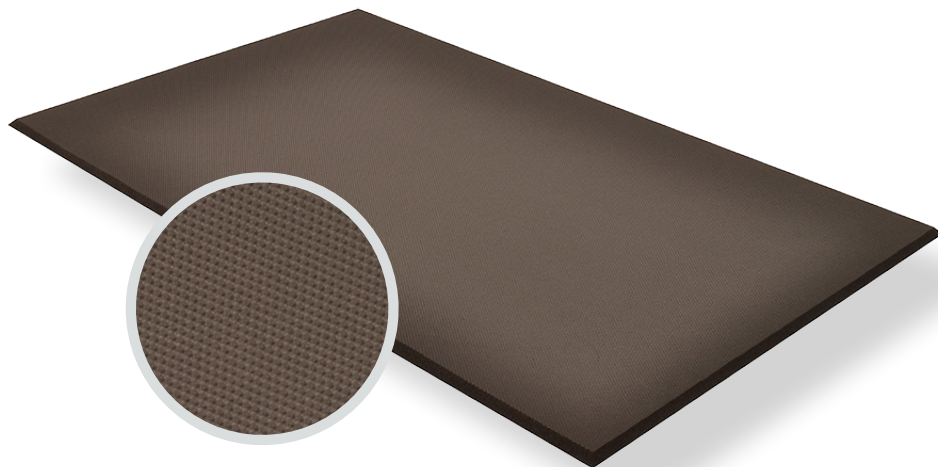
T17 - SUPERFOAM™
PRODUCT INFORMATION BROCHURE





For over 70 years, the name Notrax[®] has meant superior quality, service, and innovative products. Now this brand is a cornerstone of Justrite Safety Group, offering the widest selection of products to a variety of markets and applications including entrance mats, anti-fatigue/safety mats, and products designed specifically for use in professional food service environments. Notrax[®] offers a complete selection of floor matting options to meet any application requirement, quality expectation, and budget.

- **Track record of manufacturing high quality mats for over seventy years**
- **All products are manufactured in ISO certified facilities**
- **Notrax[®] offers anti-fatigue matting, entrance matting, safety matting, food service matting and specialty mats designed for a variety of industries**



T17 - SUPERFOAM™ is an extremely lightweight durable anti-fatigue foam mat designed especially for ease of handling and ergonomic comfort. Made from a closed cell PVC Nitrile foam blend Superfoam™ does not absorb liquids and is highly resistant to greases, oils, animal & vegetable fats. This allows it to be used in areas where occasional overspray and dripping occur such as dishwashing stations and bar areas. Because Superfoam™ is lightweight, it is the perfect mat for use in areas where mats are regularly moved for cleaning like cooking lines, service counters, and food prep stations.

Material: Nitrile/PVC Fom Blend

Features and Benefits:

- Highly resistant to grease, oils and animal & vegetable fats
- Closed cell nitrile foam, does not absorb liquids
- Durable and abrasion resistant
- Solid for dry areas
- Perforated drainage holes to remove liquid and debris for worker platform
- PVC/Nitrile closed cell foam blend
- Non-allergenic, silicone-free compound
- 45°, Beveled edges on all 4 sides

⚠ WARNING: This product can expose you to chemicals including di-2-ethylhexyl phthalate and/or diisononyl phthalate which is known to the State of California to cause cancer, birth defects or reproductive harm. For more information, visit www.P65Warnings.ca.gov



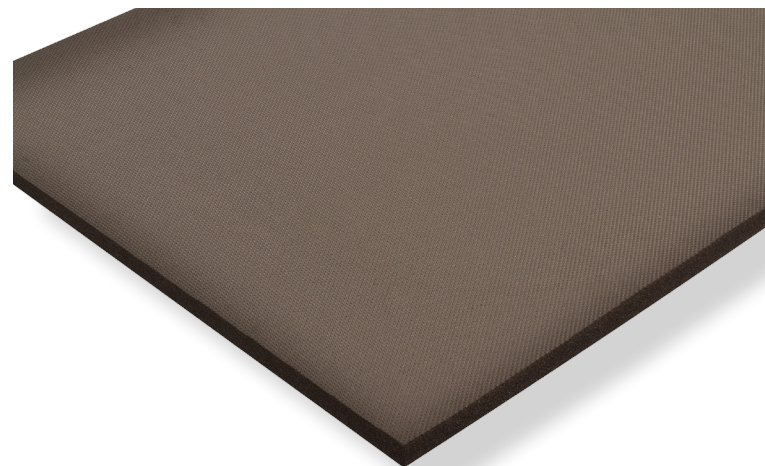
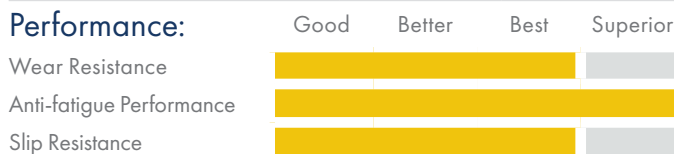
MODEL: T17

SPECIFICATIONS

Stock Sizes	3'x2', 3'x3', 3'x4', 3'x5', 3'x6', 3'x8'
Roll Sizes	3'x75', 4'x75'
Thickness	5/8"
Cut Lengths	3' and 4' widths (up to 75' long)
Colors	 Black

APPLICATIONS

- Dish washing Stations
- Bar Areas
- Cooking Lines
- Service Counters



TESTING DATA

Test	Test Description	Results
ASTM D1056	25% Compression Resistance (psi)	6.0 - 12.0
ASTM D1056	50% Compression Set (%)	25 max.
ASTM D1667	Water Absorption (lb/ft ²)	0.1 max.
ASTM D412	Tensile Strength (psi)	90 min.
ASTM D-2859/CPSC FF-170	Surface Flammability/Carpets and Rugs	Pass
ASTM D412	Elongation (%)	100 min.
Flammability FMVSS302	0 Burn Rate	Pass

*Testing performed by an independent test laboratory.

NOTRAX®

5655 West 73rd Street
Chicago, IL 60638

PHONE: (800) 621-2802

FAX: (800) 322-7105

EMAIL: saleschicago@checkers-safety.com

www.notrax.com



A PRODUCT OF:



Justrite Safety Group is the leading source of safety equipment for flammables and hazardous materials storage and handling, asset protection, environmental protection spill containment, absorbents, specialized chemical storage, cable management, safety showers and eye/face washes, matting, and vehicle safety equipment. Learn more at Justrite.com, Checkers-safety.com, and Notrax.com.