

# 348M Sani-Master™ Extension

Drying middle section to extend mat lengthwise



# Ergonomic, Anti-fatigue & Safety Matting - Hygiene Matting

## 348M Sani-Master™ Extension

Drying middle section to extend mat lengthwise. An integrated absorbing carpet mat further cleans and dries shoes to prevent slips.

- Convenient mat size fits most doorways

### Recommended use

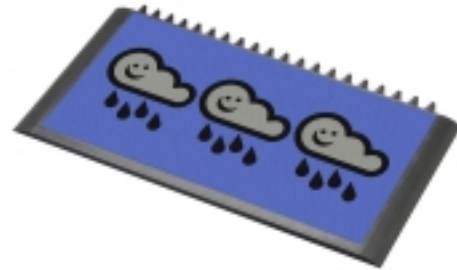
- Indoor/Portico
- At doorways, starter rooms, packaging areas, laboratories, employee locker rooms, break rooms, refuse areas and receiving areas. Any place where spread of contamination needs to be limited.
- Heavy duty

### Colors:

- Charcoal
- Logo

### Sizes:

- 91.4cm x 47.5cm



# Ergonomic, Anti-fatigue & Safety Matting - Hygiene Matting

## Sani-Master™ Extension

### General

Brand	Notrax®
Category	Hygiene Matting
Product Number	348M
Product Family	Industrial & Commercial Matting
Product Group	Ergonomic, Anti-fatigue & Safety Matting
Product Name	Sani-Master™ Extension
Recommended use	At doorways, starter rooms, packaging areas, laboratories, employee locker rooms, break rooms, refuse areas and receiving areas. Any place where spread of contamination needs to be limited.
Shipping Location	Barendrecht 2992SB, NL
Type	Wet Areas - Hygienic Mats
Update trigger	20210310-1301
Usage Intensity	Heavy duty

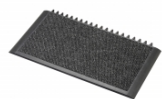
### Sustainability

Reach	Reach compliant (Registration, Evaluation, Authorization and Restriction of Chemicals).
Sustainability	Recyclable material
Warranty	1

### Technical Specifications

Application	Industrial Environments
Edges	Bevelled rubber borders on all four sides
Material	Natural rubber
Material Group	Natural rubber
Process	Compression Moulding

# Sani-Master Middle Drying Section - Charcoal



348M3660CH

Art. nr.	Dimension (cm)	Weight (kg)	Thickness (mm)
348M3660CH	91.4cm x 47.5cm	4.85	19

# Sani-Master Middle Drying Section - Logo



348M3660WH

Art. nr.	Dimension (cm)	Weight (kg)	Thickness (mm)
348M3660WH	91.4cm x 47.5cm	4.85	19