

# 419 Diamond Sof-Tred™

Dyna-Shield™ layer with non-directional "deck plate" pattern



# Ergonomic, Anti-fatigue & Safety Matting - Dry Areas Linear Lengths 419 Diamond Sof-Tred™

Exceptional worker comfort due to 12.7 mm thick specially formulated compound. Protective layer of exclusive Dyna-Shield™ extends service life by 50% compared to regular microcellular vinyl.

- Available yellow borders along sides comply with OSHA code 1910-144
- All 4 sides are bevelled and sealed to minimize tripping hazards
- Non-directional “Deck Plate” pattern allows freedom of movement

## Recommended use

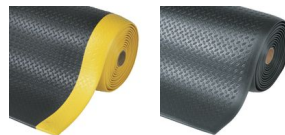
- Dry Areas
- For placement in manufacturing plants, assembly lines, picking, packing and logistics warehouses, individual work stations.
- Medium duty

## Colors:

- Black
- Black/Yellow
- Grey

## Sizes:

- 60cm x 91cm
- 91cm x 150cm
- 122cm x linm
- 60cm x linm
- 91cm x linm
- 122cm x 18.3m
- 60cm x 18.3m
- 91cm x 18.3m



WEAR RESISTANCE

SLIP RESISTANCE

ANTI-FATIGUE



# Ergonomic, Anti-fatigue & Safety Matting - Dry Areas Linear Lengths Diamond Sof-Tred™

## General

Brand	Notrax
Category	Dry Areas Linear Lengths
Product Number	419
Product Family	Industrial & Commercial Matting
Product Group	Ergonomic, Anti-fatigue & Safety Matting
Product Name	Diamond Sof-Tred™
Recommended use	For placement in manufacturing plants, assembly lines, picking, packing and logistics warehouses, individual work stations.
Shipping Location	Barendrecht 2992SB, The Netherlands, Moselle, MS 39459, United States
Type	Dry Areas - Dyna Shield™
Update trigger	20210310-1301
Usage Intensity	Medium duty

## Sustainability

REACH	Reach compliant (Registration, Evaluation, Authorization and Restriction of Chemicals).
Reach US	Reach compliant (Registration, Evaluation, Authorization and Restriction of Chemicals).
Rohs US	Rohs compliant (Restriction of Hazardous Substances).
Sustainability	Recyclable material
Warranty	1

## Tests

Abrasion Resistance 1000	2.20%
Abrasion Resistance 500	0.83%
Compression Deflection 1.4	0.67 cm
Compression Deflection 2.8	0.82 cm
Elongation	147%
Fire rating US	Pass
Foam Battery	40 lb/in <sup>2</sup>
Hardness	20 Shore A
Slip Rating	R10
Coefficient Friction Dry	1.00
Surface Flammability	Pass
Tear Strength	12.1 lb

## Technical Specifications

Application	Industrial Environments
Backing	Microcellular vinyl
Breaking Load	16.8 lb
Edges	Bevelled edges on all sides
Material	Microcellular vinyl
Material Group	Vinyl
Process	Foaming

## Diamond Sof-Tred™ Grey

Art. nr.	Dimension (cm)	Weight (kg)	Height (cm)
419S0035GY	91cm x 150cm	5.3	1.27
419S0023GY	60cm x 91cm	2.1	1.27
419C0036GY	91cm x linm	3.5	1.27
419C0024GY	60cm x linm	2.3	1.27
419R0024GY	60cm x 18.3m	43	1.27
419R0048GY	122cm x 18.3m	86	1.27
419C0048GY	122cm x linm	4.7	1.27
419R0036GY	91cm x 18.3m	64	1.27

## Diamond Sof-Tred™ Black

Art. nr.	Dimension (cm)	Weight (kg)	Height (cm)
419S0035BL	91cm x 150cm	5.3	1.27
419C0024BL	60cm x linm	2.3	1.27
419C0036BL	91cm x linm	3.5	1.27
419S0023BL	60cm x 91cm	2.1	1.27
419R0036BL	91cm x 18.3m	64	1.27
419R0048BL	122cm x 18.3m	86	1.27
419C0048BL	122cm x linm	4.7	1.27
419R0024BL	60cm x 18.3m	43	1.27

## Diamond Sof-Tred™ Black/Yellow

Art. nr.	Dimension (cm)	Weight (kg)	Height (cm)
419C0024BY	60cm x linm	2.3	1.27
419S0023BY	60cm x 91cm	2.1	1.27
419C0036BY	91cm x linm	3.5	1.27
419S0035BY	91cm x 150cm	5.3	1.27
419R0024BY	60cm x 18.3m	43	1.27
419C0048BY	122cm x linm	4.7	1.27
419R0048BY	122cm x 18.3m	86	1.27
419R0036BY	91cm x 18.3m	64	1.27