

Mats for Professional Use

5S Anti-fatigue Workplace Matting



What is 5S?

5S is a methodology used for handling workplace organization. This system helps to keep an organized workplace and helps to reduce/eliminate waste created by clutter, lack of information, duplication, underutilized space and inconsistency in processes. The methodology rests on five pillars.

History

The history of the 5S method starts in post-world-war Japan. Originally developed by the Toyota Motor Corporation's founder Sakichi Toyoda, the "5S" methodology was developed in order to make just-in-time (JIT) manufacturing possible while improving efficiency, effectiveness and safety.

Benefits of 5S

The benefits of 5S in the organization of a workplace can be noticed in several aspects:

- **Efficiency:** A clean and organized workplace, allows employees to more quickly identify problems and prevent time lost. Individuals have more control over their workspace by identifying what, where, and how much they need as well as maintaining it visually.
- **Reduces waste:** Only the necessary materials and tools used in the process are available at the workplace avoiding unnecessary clutter.
- **Improve speed and quality of work:** With every tool in a defined place, the daily tasks of employees are executed in a faster manner.
- **Safety:** With a clean and well-identified environment, it's possible to identify abnormal situations earlier, and it promotes and supports discipline.
- **Creates a pleasant work environment:** People feel better about their work area and take pride and ownership in the results.



The 5S Pillars



Sort

The first step of the implementation process focuses on eliminating unnecessary items from the workplace that are not needed for current production operations.



Set In Order

Once the "Sort" step has been concluded, it's time to organize and designate a place for each item. The Set In Order step focuses on organizing items in a logical way to make the daily workload of employees easier to complete.



Shine

The next step in the process is to rigorously clean and keep the workspace organized. It's a daily task to maintain a tidy work area and identify items out of place and missing.



Standardize

It's time to establish and communicate the procedures for the processes used to sort, organize and clean the workplace. This pillar utilizes a set of schedules and checklists that can be easily followed so that all employees know what needs to be done, when and how.



Sustain

Transform the 5S process into a daily habit of your employees, maintaining and reinforcing involvement in achieving goals.

5S Colour Code

Floor marking is a useful organizational tool that can prove invaluable for anyone designing a straightforward 5S program. While not mandatory, 5S offers a variety of recommended colour standards that are used in facilities around the world.



Light grey

The floor inside the work cells.



Yellow

Traffic lanes, walkways, machine guards, and zones.



Red

Products to be reworked or to be used as scrap.



Black

For production or material handling equipment.



Orange

For raw materials.



Blue

For materials or components that are used in the production process.



Green

For finished goods or outgoing materials.



Red & White

Areas that need to be kept clear for any type of safety or compliance reasons.



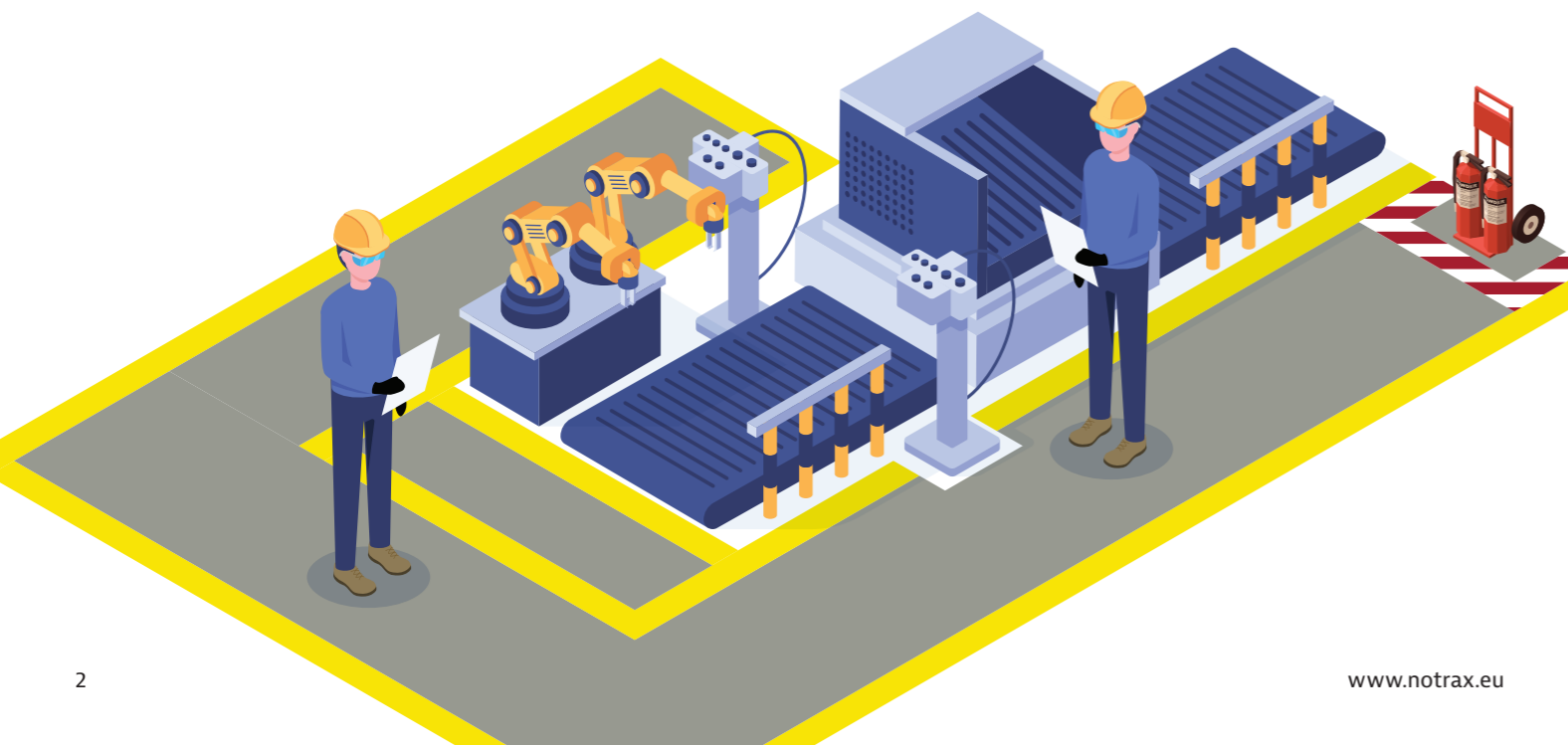
Black & White

For areas where you store empty containers.



Yellow

For areas that could expose employees to health hazards or physical risks.

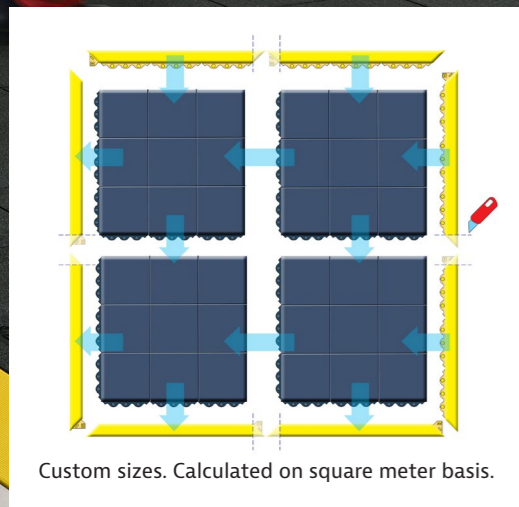
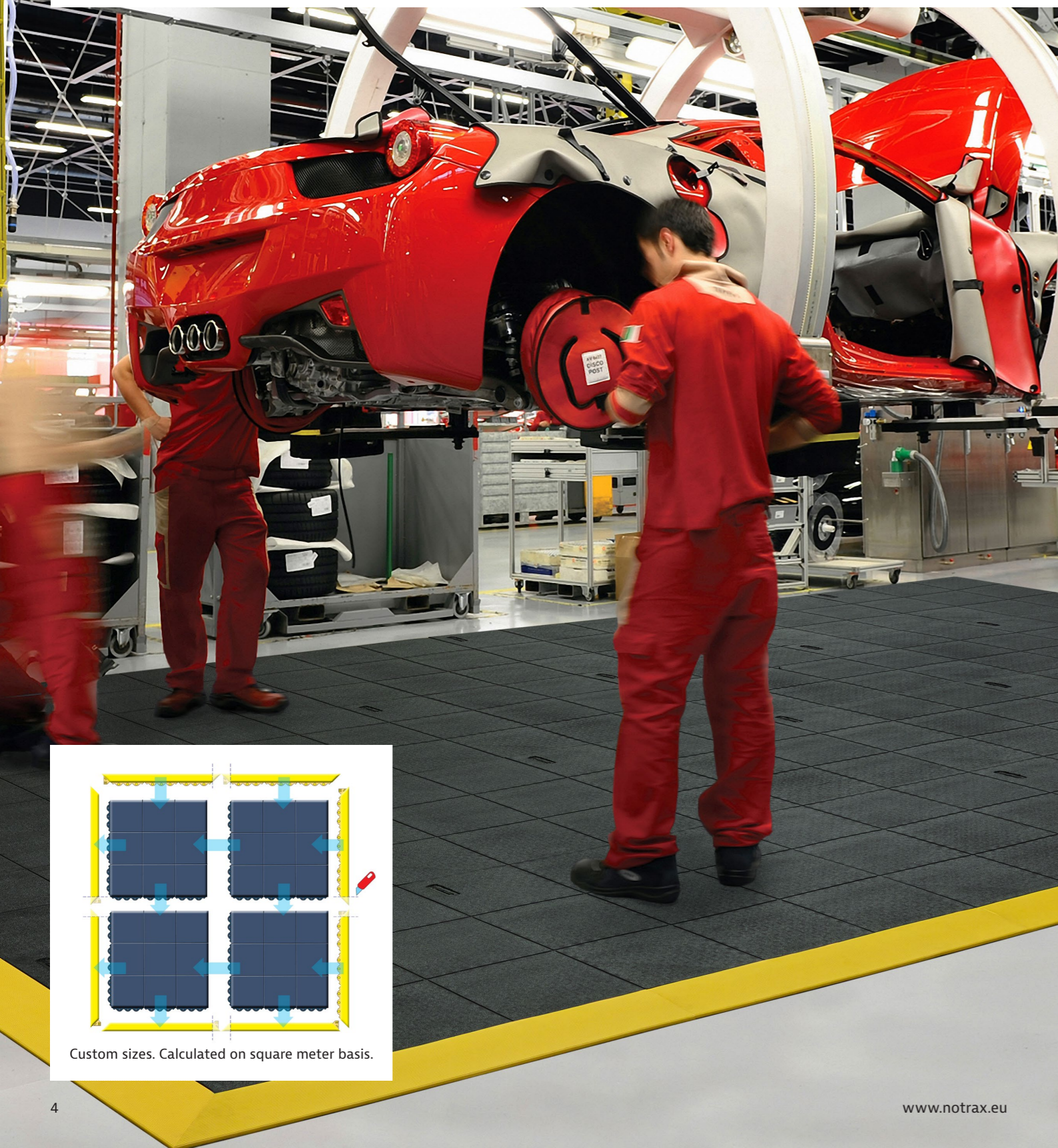


Dry Areas - Heavy Duty Modular Rubber Mats

Cushion Ease Solid™ Series

Heavy duty rubber tiles of 91 cm x 91 cm can be easily assembled for coverage of large areas or individual workstations, wall-to-wall or as islands.

Ergonomic benefit derived from a 19-mm thick worker platform with a closed anti-slip pebble structure surface for maximum anti-fatigue comfort in dry industrial environments.



Custom sizes. Calculated on square meter basis.

656S Cushion Ease Solid™ Nitrile - 5S Grey

Recommended uses:

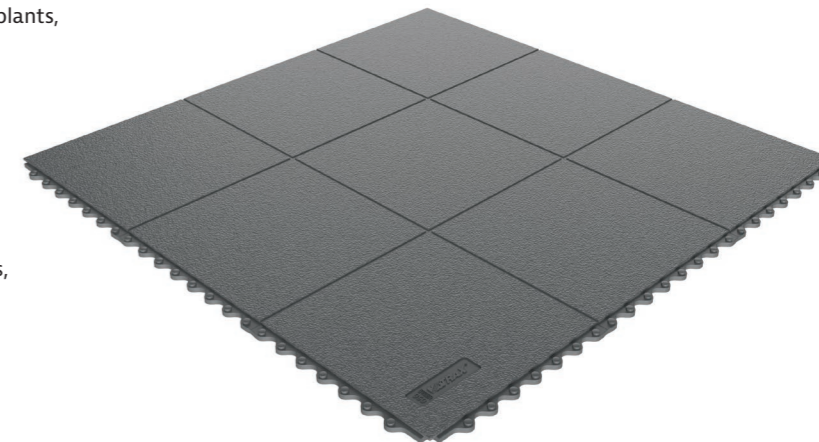
- Heavy duty - dry industrial environments in manufacturing plants, production and assembly lines

Specifications:

- 100% nitrile rubber compound
- Resistant to most industrial oils
- Overall thickness: 19 mm
- Weight: 12.7 kg per mat
- Slip resistance rating R9 according to DIN 51130
- Free of DOP, free of DMF, free of ozone depleting substances, free of silicone and free of heavy metals

Stock sizes:

- 91 cm x 91 cm



569 Cushion Ease Solid™ Nitrile Marking Line

Safety markings for marking borders, walkways, zones and safety barriers

Specifications:

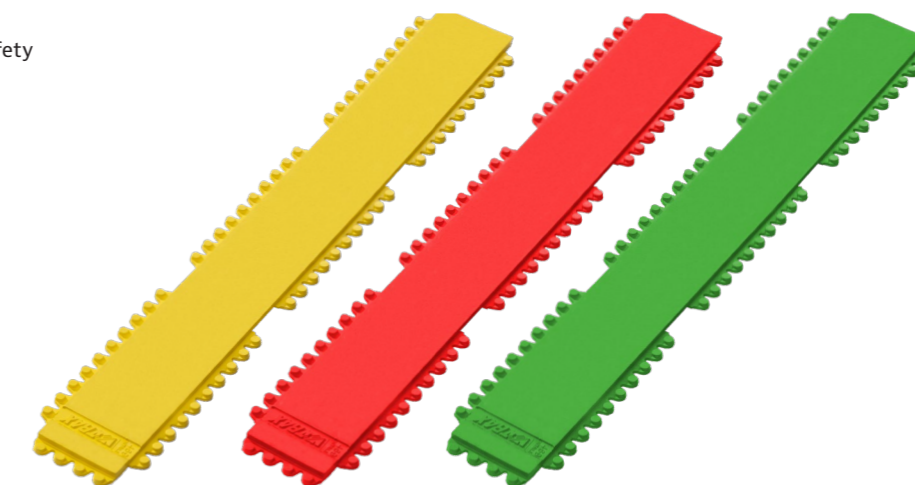
- 100% nitrile rubber compound
- Overall thickness: 19 mm

Colours:

- Yellow
- Red, Green available on request

Stock sizes:

- 10 cm x 91 cm
- 10 cm x 10 cm



Bevelled safety ramp system to avoid tripping. Compatible with the Cushion Ease™ modular mats and the Safety Stance™ mats. Cutting lines for inside and outside corners.

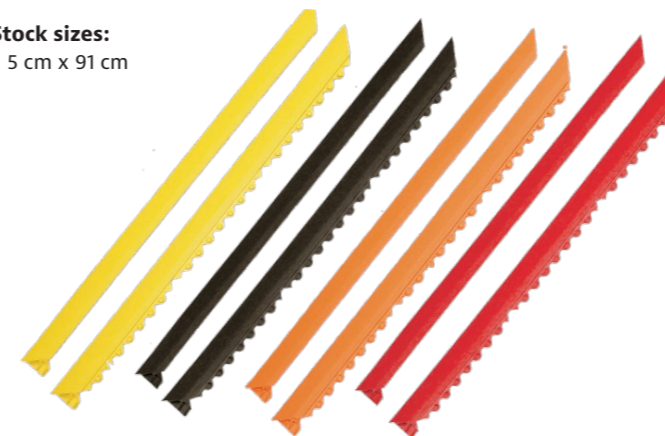
551 MD Ramp System™ Nitrile

Colours:

- Yellow, Black, Orange, Red

Stock sizes:

- 5 cm x 91 cm



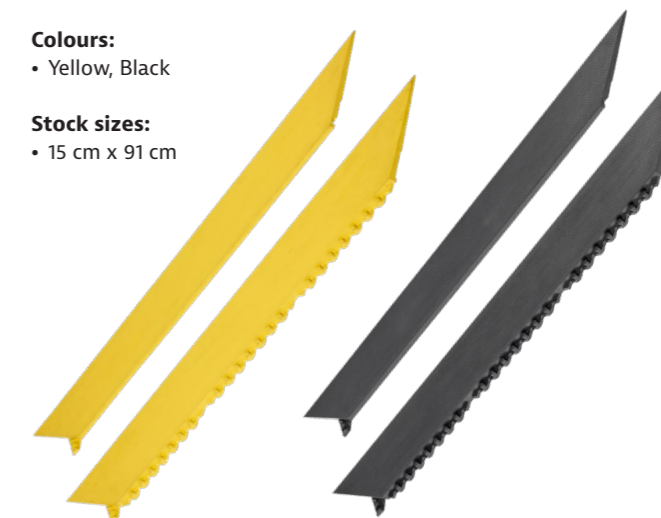
552 MD Ramp System™ Nitrile

Colours:

- Yellow, Black

Stock sizes:

- 15 cm x 91 cm

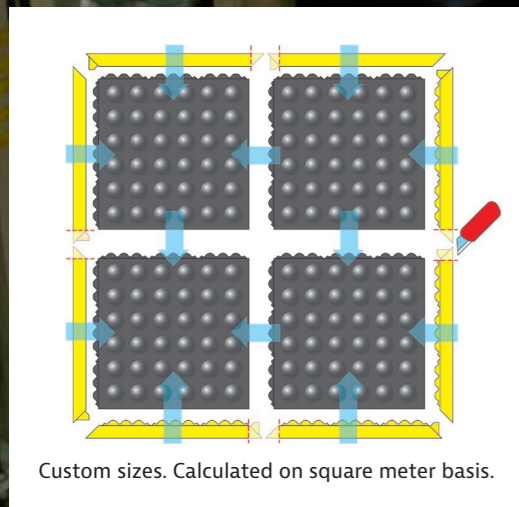
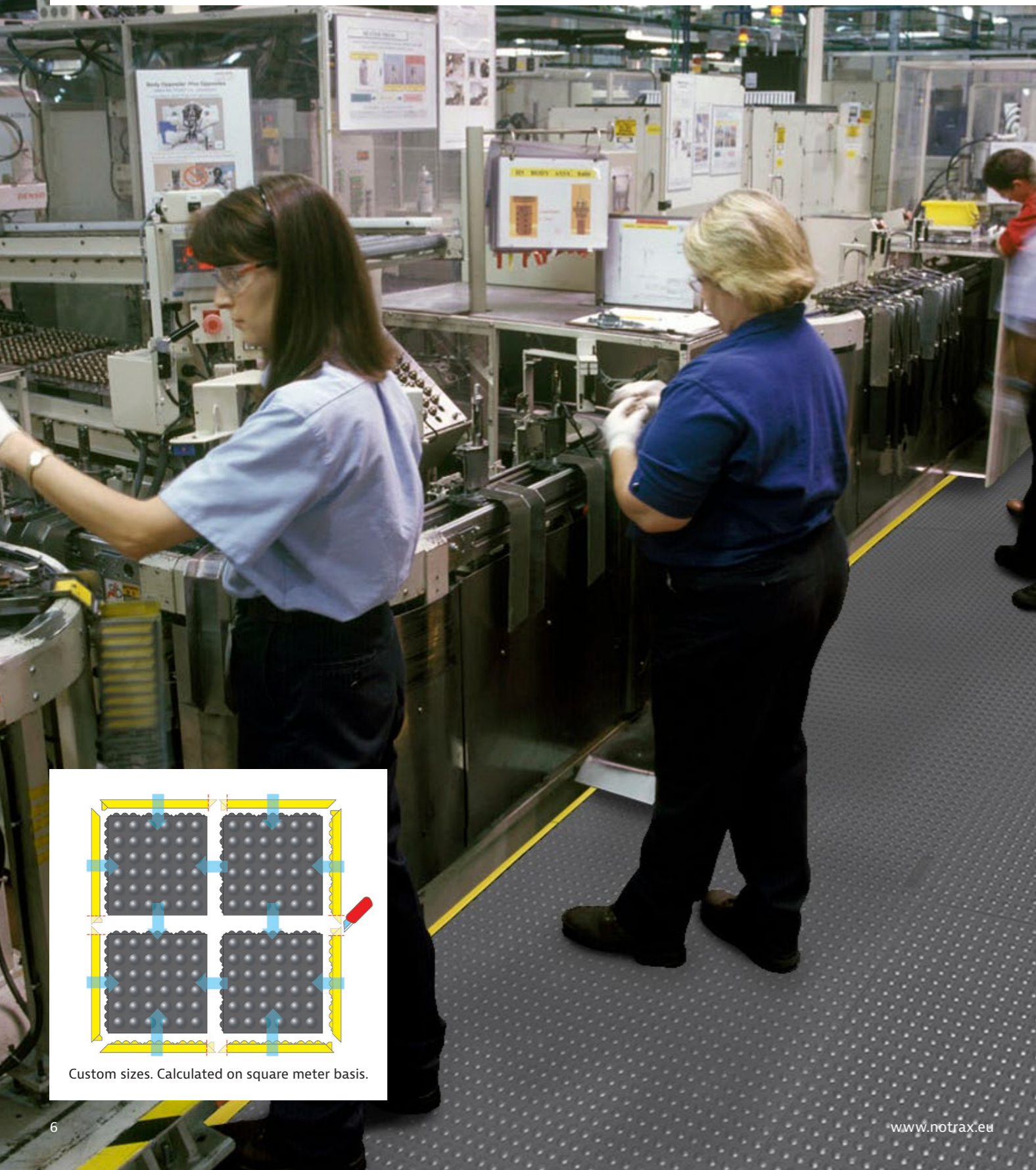


Dry Areas - Heavy Duty Modular Rubber Mats

Skywalker HD™ Series

Heavy duty rubber tiles of 91 cm x 91 cm can be easily assembled for coverage of large areas or individual workstations.

Ergonomic benefit derived from a 13-mm thick worker platform with a bubble pattern for maximum fatigue relief in dry industrial environments.



Custom sizes. Calculated on square meter basis.

462 Skywalker HD™ Nitrile - 5S Grey

Recommended uses:

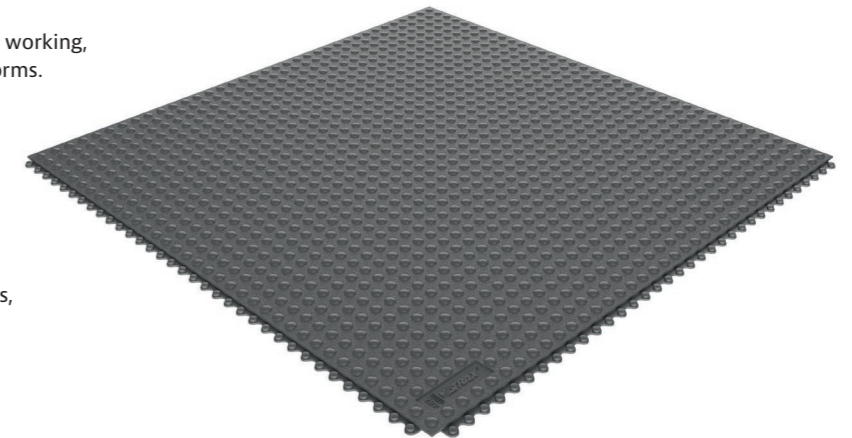
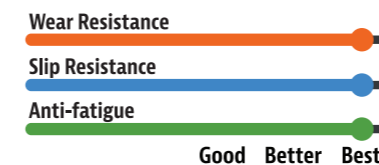
- Heavy duty - dry industrial environments. For placement in manufacturing plants, production and assembly lines, metal working, fabrication, individual workstations and custom work platforms.

Specifications:

- 100% nitrile rubber compound
- Resistant to most industrial oils
- Overall thickness: 13 mm
- Weight: 10 kg per mat
- Slip resistance rating R9 according to DIN 51130
- Free of DOP, free of DMF, free of ozone depleting substances, free of silicone and free of heavy metals

Stock sizes:

- 91 cm x 91 cm



469 Skywalker HD Marking Line™

Yellow marking line for marking borders, walkways, zones and safety barriers

Specifications:

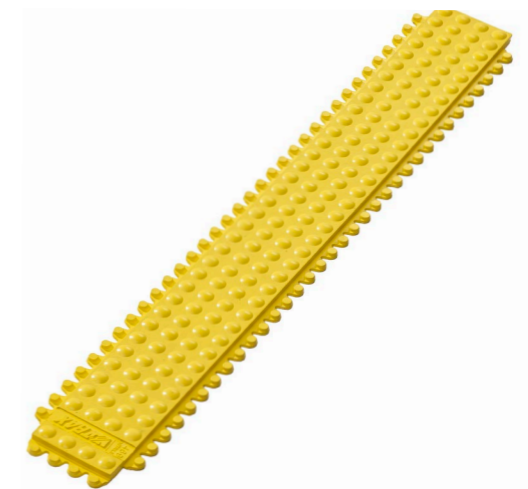
- 100% nitrile rubber compound
- Overall thickness: 13 mm

Colours:

- Yellow

Stock sizes:

- 10 cm x 91 cm



461 Skywalker HD™ Safety Ramp Nitrile

Bevelled safety ramp system to avoid tripping. Compatible with the Skywalker HD™ modular mats. Cutting lines for inside and outside corners.

Colours:

- Yellow, Black

Stock sizes:

- 5 cm x 91 cm

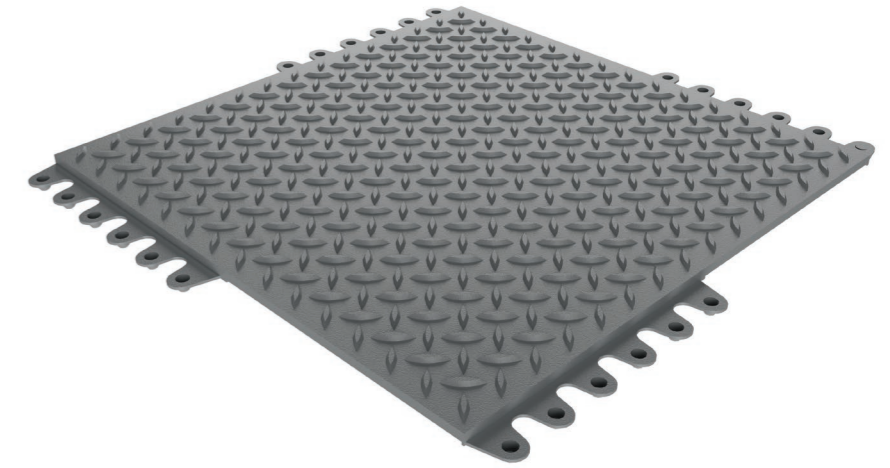


Dry Areas - Heavy Duty Modular Rubber Mats

De-Flex™ Series

Extremely comfortable heavy duty anti-fatigue matting system with popular diamond plate traction surface that can be easily assembled for coverage of large areas or individual workstation mats.

These 45 cm x 45 cm modular rubber tiles are designed with a universal double-locking system on all sides to ensure an extra strong yet seamless connection for fast installation.



Nitrile - 5S Grey

Recommended uses:

- Heavy duty - dry industrial areas

Specifications:

- 100% nitrile rubber compound
- Resistant to most industrial oils
- Overall thickness: 19 mm
- Weight: 3.3 kg per mat
- Slip resistance rating R10 according to DIN 51130
- Free of DOP, free of DMF, free of ozone depleting substances, free of silicone and free of heavy metals

Stock sizes:

- 45 cm x 45 cm



571 De-Flex™ Safety Ramp Nitrile

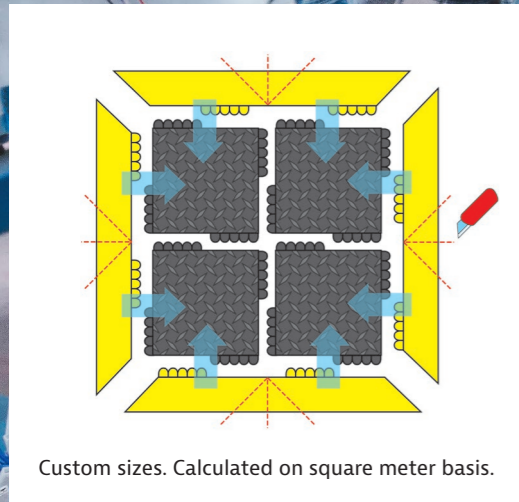
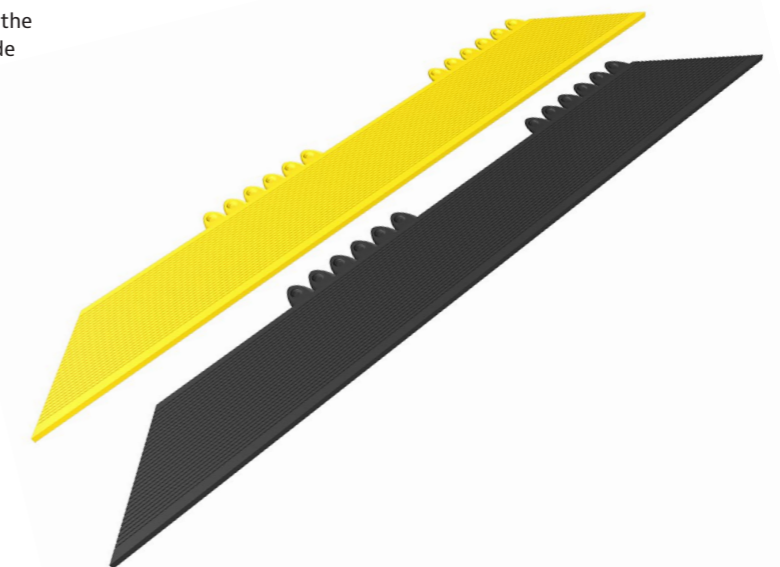
Bevelled safety ramp system to avoid tripping. Compatible with the Skywalker HD™ modular mats. Cutting lines for inside and outside corners.

Colours:

- Yellow, Black

Stock sizes:

- 15 cm x 91 cm



Custom sizes. Calculated on square meter basis.

Dry Areas - Medium Duty Rubber Standalone Mats

526G Sani-Flex™

Specially designed for the lab industry, Sani-Flex™ anti-fatigue matting provides the optimum combination of comfort, anti-slip surface, quality and durability, as well as oil/grease and chemical resistance.

Its smooth surface and rounded off edges make it easy to clean. Small sizes are perfect for stationary working areas as well as making the mats light and easy to handle.



526G Sani-Flex™ 5S Grey

Recommended uses:

- For placement in laboratories, pharmacies, clinics, as well as manufacturing plants, assembly lines, picking, packing and logistics warehouses, individual work stations.

Specifications:

- Closed anti-slip gritted structure surface
- Superb anti-fatigue properties due to its unique design underneath
- 100% nitrile rubber compound, designed to yield a long service life
- Resistant to most industrial oils

Colours:

- Grey

Stock sizes:

- 46 cm x 61 cm
- 61 cm x 91 cm

Wear Resistance



Slip Resistance



Anti-fatigue



Good Better Best





Justrite Safety Group



Since its humble beginnings as a small family-owned company in 1948, our commitment has been to make quality products and to continue looking for innovative ways of serving our customers. Notrax® operates manufacture facilities in Mississippi and Illinois in the United States and Barendrecht in The Netherlands. Now, as part of the Justrite Safety Group, we excel in the design and manufacturing of anti-fatigue and safety matting for industrial and commercial applications.

Ergonomic, Anti-fatigue & Safety Matting

- Anti-fatigue matting
- Anti-slip mats
- Welding mats
- Electrostatic discharge mats
- Food processing and food service mats
- Hygienic mats

Industrial Specialties

- Switchboard matting
- Mats with sorbents
- Rubber runners and liners

To learn more about our full portfolio of products, please visit [notrax.eu](https://www.notrax.eu)